

What's in it for you?

Residence Hall life offers major advantages:

- Fewer monthly bills to pay and no hassles of dividing up bills with roommates
- Payment options available
- Choosing your own roommate or having one assigned to you
- No commuting costs such as gas, travel time or traffic frustrations
- A safe living environment in 24-hour secured buildings
- A strong sense of community, along with the endless opportunity to live and learn with people of diverse backgrounds

The rewards of living on campus are many:

- Becoming part of a smaller community with its own personality.
- Meeting people of diverse backgrounds.
- Developing meaningful friendships.
- Getting caught up in the life and spirit of MSU Moorhead.

Assistance when you need it

Every hall has a staff of Resident Assistants available to help you. They plan hall activities, provide a variety of programming, assist with problems and locate other campus resources to help you achieve academic success.

Endless opportunities

Living in the residence halls makes you a part of a smaller community. Each floor has its own personality and unique features. Opportunities for involvement are numerous: Hall Council, Conduct Committee or Residence Hall Association, or apply to be a Resident Assistant. Through the friends you make you'll find out about all the other clubs and activities available to you, both on and off campus. Visit the Residence Hall Association Web site to see what's here for you – www.mnstate.edu/rha

A safe place to lay your head

Providing safety and security for students, faculty and staff, Campus Security's dispatch center is staffed 24 hours a day. Between 6 p.m. and 7 a.m., roving staff tour university parking lots, academic buildings, residence hall perimeters and the campus grounds. Exterior doors of all residence halls are locked 24 hours a day and keyed to limit access to hall residents only. Residents should report any criminal behavior they observe or encounter for immediate action.

Keeping families connected

To avoid figuring out who made which call, long distance calls require use of a calling card in the residence halls. You can use any phone calling card of your choice, a pre-paid calling card or your own cell phone.

Simplify your life

The charges printed on your fall and spring fee statement are all you pay for room and meals.

You don't have to worry about telephone or cable TV hook-ups and payments, or utility deposits and payments. If you've added one of the numerous meal plans to your room contract, it makes grocery shopping, cooking and kitchen chores a thing of the past.

True academic success

There are academic benefits to living in the residence halls. Studies show that students living on campus generally graduate in four years, achieve higher GPAs than off-campus students, and are more involved in campus life. Each residence hall provides study rooms for resident access to provide alternate study space.



Something **Everyone** for



Each of MSU Moorhead's eight residence halls offers a unique flavor of student life. Whether it's co-ed or same gender halls, double or single (limited) accommodations, carpeting, distinctive room shapes, independent living environments or a panoramic view of Fargo-Moorhead, one thing is certain—there's something for everyone.

On-campus living puts everything at your fingertips. You can use sports equipment, exercise equipment, board games, tools, vacuum cleaners and irons. Residence halls provide cable television, ice machines and snack

vending, mail service, recreation areas and weight and exercise rooms. Common lounges and kitchenettes in every building give you a place to fix snacks to get through that late night of studying. MSUM even keeps you connected to the world, providing local and national newspapers five days a week.

It's all up to you. Take a look at the chart outlining each hall's special offerings as well as each hall description, and find the hall that best suits you. Remember, residence life is what you make it. The first step is finding a place to call home.

	Holmquist	Nelson	Grantham	Dahl	Ballard	Snarr East	Snarr South	Snarr West
Capacity	200	398	196	295	166	196	188	69
Stories/Levels	3	12	4	3	3	3	3	4
Carpeted Rooms	●	●	●	●				●
Kitchen Areas	●	●	●	●	●	●	●	●
Elevators		●	●	●	●	●	●	●
TV Lounge	●	●	●	●	●	●	●	●
Central Laundry Room			●	●	●			
Laundry on Each Floor	●	●	●				●	●
Weight Room	●	●	●	●	●	●	●	●
Beds Can Be Lofted	●	●	●	●	●	●	●	●
Ice Machines	●	●	●	●	●	●	●	
Bathtub	●	●	●	●			●	
Vending Machines	●	●	●	●	●	●	●	●
Piano			●	●	●	●	●	●
Co-Ed	●	F	●	F	M	●	●	●
64 or More Credits								●
32 or More Credits	●	●		●				

Legend

- Available
- Not Available
- ◐ Available One Wing or Floor or Shared



Special Interest Floors

- 64 or more credits: Students who have at least 64 credits can be assigned to these rooms. There is no staff member on the floor, offering a true independent living environment.
- 32 or more credits: Only students who have at least 32 credits OR who are at least 20 years of age will be assigned to rooms in these residential areas.
- Seniors, juniors and older: These students can choose to live in John Neumaier apartments, featuring two bedrooms, two baths and a complete kitchen.

Bring a few things home from

All rooms are furnished with blinds, a standard twin bed and mattress, desk with chair and lamp, individual thermostat, bookshelves, closet, telephone and a wastebasket. The Housing Office rents micro-fridges (microwave/fridge combinations), but you may also bring your own.

You supply:

- Bed linens, mattress pad and pillows for a regular size twin bed
- Towels and personal hygiene items
- Dishes and silverware for snacking
- Clothes hangers and laundry items
- TV, stereo, computer, alarm clock
- Personal items/study resources
- Check with your roommate to avoid duplication

These items are prohibited:

- Open coil cooking appliances
- Drugs obtained without a doctor's prescription
- Firearms, explosives, bows and arrows, swords or other weapons
- Alcoholic beverages
- Candles and incense
- Air conditioners, torchiere lamps, halogen bulbs
- Cigarettes, cigars, pipes... all halls are smoke free
- Pets (other than fish)

www.mnstate.edu/housing



Virtual Housing

www.mnstate.edu/housing

MSUM's Housing Web site offers all the basic information you'll need, plus a Virtual Tour of MSU Moorhead's residence halls. This visual tour includes a 360-degree view of your room choice options, floor lounges, hall exteriors and front desk areas, and some of the laundry facilities. In addition, the contract and cost information is kept up to date on this site for your convenience.



Snarr Complex

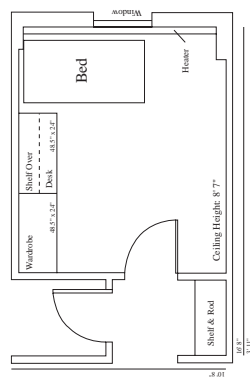
A place to stay connected.



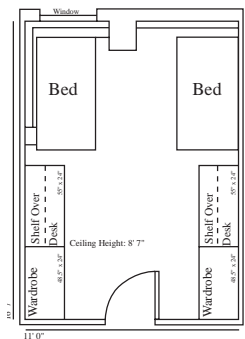
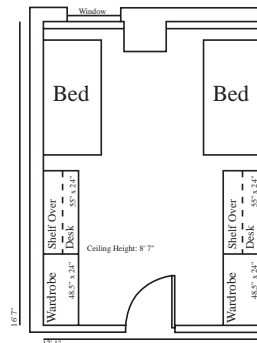
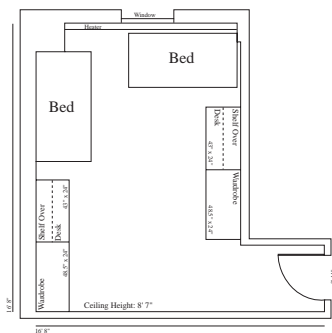
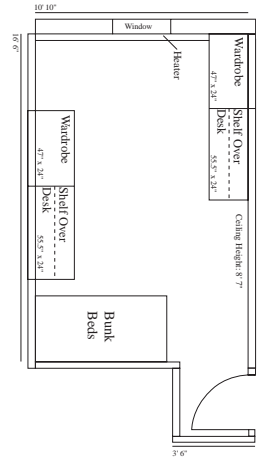
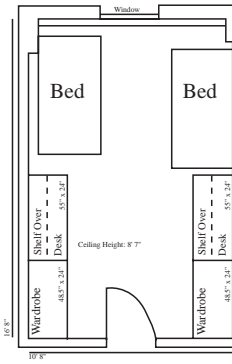
Snarr complex is an interconnected, active community of three buildings including East Snarr, South Snarr and West Snarr. Snarr complex is the most accessible of our facilities for physically challenged residents. Please contact the Housing Office to discuss any accommodations that may be needed.

South Snarr

South Snarr is a co-ed hall offering single (14) and double rooms for its 188 residents. It's an active, close-knit hall that houses predominantly upperclass students. Each floor contains laundry, study and kitchen facilities, along with a common lounge. In South Snarr, each floor offers four to six different physical room layouts, giving its residents a variety of room options.



single

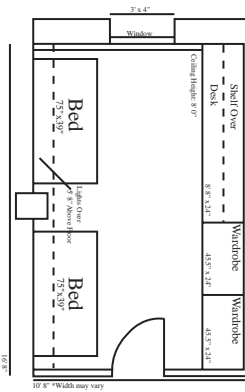


Snarr Complex

A place to stay connected.

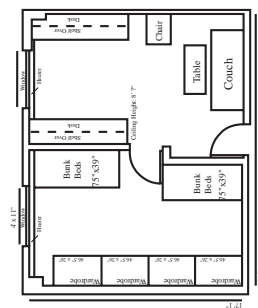
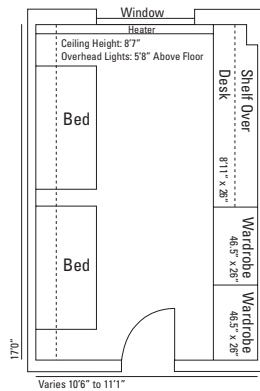
East Snarr

East Snarr is a co-ed hall housing 200 men and women within a unique floor plan. Centrally located bathrooms, recently remodeled floor lounges and a kitchenette area separate men's and women's rooms. In addition, it offers a laundry facility, study lounges, and a large TV lounge on the main floor. Beds cannot be lofted.



West Snarr

West Snarr is a co-ed hall with upperclass women and men living on the same floors. West Snarr can accommodate 69 students with 17 double-as-single rooms for students with 64 or more credits. Attracting people of diverse backgrounds, it currently has two independent lifestyle floors with no Resident Assistant. Kitchenette and laundry areas are on each floor. All of the rooms are carpeted. Beds cannot be lofted.



suite



Dahl Hall

A place with space.

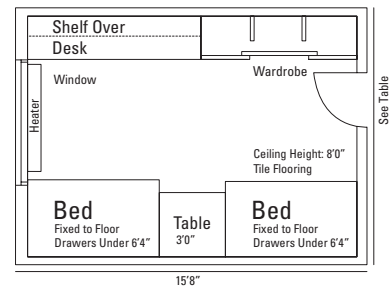


Dahl Hall is an all-female residence hall for more than 290 women located east of the Comstock Memorial Union. Dahl residents find tremendous support here, and many say it's the best place to begin the college experience. Dahl is extremely spacious, with large study, kitchen, laundry and aerobics/cardio exercise facilities. Because the beds are built in and permanently affixed to floors, beds can't be lofted.



Dahl's features:

- Two laundry rooms in the basement
- Study lounge, kitchen and weight room in the basement
- Microwaves in 2nd and 3rd floor kitchenettes
- Large main lounge with piano and TV
- Carpeted aerobics room with mirrored wall and TV/VCR in the basement
- Hendrix Health Center is located in the lower south level (through Fall 2002).



Ballard Hall

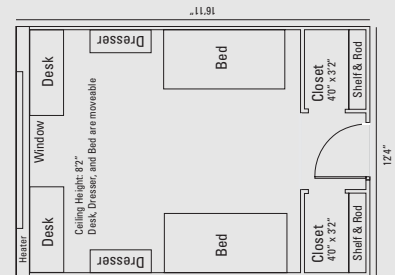
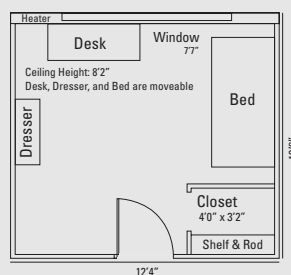
Location. Location. Location.



Ballard Hall, MSUM's only all-male residence hall, offers single and double room options for 166 residents. Centrally located, Ballard is just steps from both Kise Commons dining service and the Livingston Lord Library, as well as being the closest residence hall to academic buildings. Ballard houses a weight room in its basement, and the Housing Office on the first floor.

Ballard's features:

- Kitchen and laundry room in the basement
- Large floor lounges furnished with TVs
- Main lounge with TV and piano
- 54 single rooms
- Option to purchase a permit for the reserved Ballard lot on a first come, first served basis



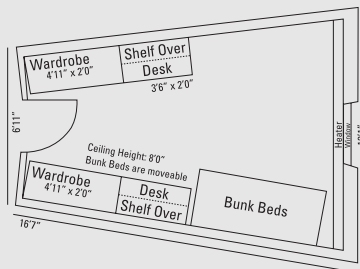
Nelson Hall

If you're tired of four square walls.

Nelson Hall is a circular 12-story high-rise providing a home for nearly 400 women in single and double pie-shaped rooms. Nelson provides a panoramic view of the campus and the city that creates an open feeling, and its unique pie-shaped rooms take the traditional four square walls out of residence hall living. Nelson's connection to Grantham makes these halls a lively, expanded community.

Nelson's features:

- Laundry area and study rooms on each floor
- Kitchenettes with range/oven on each floor
- 37 double-as-single rooms and eight single rooms
- Eleventh floor, designated for students who have earned 32 or more credits, has carpeted rooms
- A twelfth floor lounge with a great view and meeting/study space



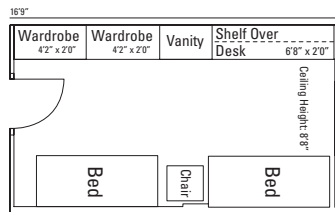
Grantham Hall

It's easy to feel at home.

Grantham Hall is a co-ed residence for nearly 200 residents living in a close-knit community. Grantham's main floor lounge is an active place for all kinds of socializing, and the floor lounges encourage cohesive, strong communities. Being physically connected by an enclosed walkway to Nelson makes for an active community within the Nelson/Grantham/Holmquist complex.

Grantham's features:

- Laundry area on each floor
- Kitchen off the main lounge
- Piano room on the first floor
- Spacious main lounge with a TV
- 12 single rooms
- Located in the center of the residential part of campus
- Study rooms and kitchenette areas on each floor



Holmquist The space you need.

Hall

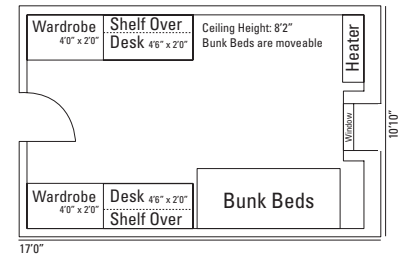


Holmquist is a co-ed hall for 200 students located on the east side of campus.

Holmquist's first floor boasts 10 two-bedroom suites for male and female upperclass students who have at least 32 credits and/or are at least 20 years old. Each suite accommodates up to four roommates. Holmquist's second and third floors house men and women in alternating wings.

Holmquist's features:

- Located close to Nemzek Athletic Complex
- Convenient access to parking
- Weight room
- Large main lounge with TV and kitchenette
- Laundry and study rooms on each floor
- 12 single rooms



Neumaier Off campus experience with on-campus convenience.

Apartments

Our new apartment facility, John Neumaier Hall, opened for students in fall 2002. It's conveniently located behind Snarr Hall, facing Murray Beach. John Neumaier Hall contains 35 student apartment units, housing a minimum of two to a maximum of four men or women per apartment. To be eligible, students must have earned at least 30 credits, have a 2.5 GPA and be in good conduct standing.

Each apartment unit includes two bedrooms, each with its own bathroom, living room and fully equipped kitchen (range, refrigerator, microwave and dishwasher). Living room and bedroom areas are carpeted; kitchen and bathrooms have vinyl

flooring. Each apartment has its own electric furnace and water heater. Both bedrooms and living room feature Ethernet connections, cable and phone jacks. It is a security building, with card readers on exterior doors and a buzzer/intercom for guests. Two Apartment Assistants live in the facility.

The apartment building provides lounge space for multipurpose usage, mailboxes in the foyer, a hall desk, small vending area, and a washer and two stack dryers on each floor wing for laundry service. Campus policies remain in effect. Residents enjoy 24-hour visitation in the apartment complex.

John Neumaier Hall provides the space and additional privacy of an off-campus apartment coupled with the convenience, advantages and accessibility of on-campus living.

Neumaier's features:

- Living room is approximately 11'5" x 13'7"
- Kitchen area is approximately 10'4" x 15'10" and includes a furnace room, a pantry (4' x 2'9") and entry closet (2'2" x 5'6")
- Each bedroom is approximately 10'8" x 13'7" and includes a walk-in closet (4' x 7'), and a connection to its own full bathroom, approximately 10'4" x 5'6"

Visit John Neumaier Hall on our virtual tour on our Web site www.mnstate.edu/housing

Campus Dining Services

You won't believe what we've got cookin'

It's 11:00 a.m. You've had two classes already and your stomach is growling. You open your cupboard and find macaroni, corn chips, and half a jar of Miracle Whip. ARGHHH!!

Don't let this happen to you. Select one of our several meal plan options. Any plan – 5, 10, 14, or 21 meals per week, or the Any 90 meals per semester – lets you feast on unlimited seconds on most items in Kise Commons.

Our meal plans offer a convenient way to use many of the services that will be a part of your life at MSUM. Below are answers to students' most frequently asked questions.

How do these meal plans work?

- The 5, 10, 14 and 21 meals/week plans provide that number of meals each week. These plans let you eat any combination of the allotted meals during the week. You can eat three meals one day, two the next, none on the third and so on, until you've eaten the number of meals per week you signed up for. All of these meal plans include 100 Dragon Dollars.
- Unused meals do not carry over to the next week, and there are no refunds for uneaten meals. The meal plans are developed and priced based on a participation factor.
- The Any 90 meals/semester plan provides 90 meals, again eaten in any daily combination you choose, over the entire semester. You can always check your semester balance of meals by asking the cashier. Unused meals do not carry over to the next semester. Unique features of this plan include greater flexibility in when you choose to eat, and using your meal plan to treat up to four guests at any meal.
- The billing cycle for meal plans begins on Friday and ends on the following Thursday.

How do I decide which plan is best for me?

- The 14 meals/week plan is our most popular, with the 10 meals/week plan a close second. The 21 meals/week plan suits those who prefer the more traditional three meals per day.
- When deciding which plan is for you, you might want to consider these questions:
 - * Do you skip breakfast? The 14/week plan may be best for you.
 - * Do you go home on weekends and never eat breakfast during the week? Then the 10/week plan may be a good choice.
 - * Will you have a job off campus that provides meals? Maybe you only need a 5/week or just the Dragon Plan.
 - * Do you plan on cooking some of your own meals?



Can a friend use my meal plan?

Meal plans are non-transferable (but you can treat a friend on the Any 90 meal plan or by using Dragon Dollars).

What is the Meal Exchange?

This program is meant to give you an occasional change of pace or another location option when you can't make it in during Kise's serving hours.

- The Meal Exchange lets you use your Kise dining card at the CMU's Subs and Sweets and Union City Café's Burger King or Pizza Hut during non-peak serving times; for instance, lunch at 2:15.
- It's a convenient feature when you've missed lunch at Kise because of a late class.
- Signs are posted at the food locations explaining allowable food exchange choices and serving times.
- Just tell the cashier you want to use the meal exchange for your purchase.

What are Dragon Dollars?

100 Dragon Dollars are attached to all meal plans on a declining balance basis. You don't have to carry cash; just use your meal card.

- Tell the cashier you want to use Dragon Dollars for your purchase and they are automatically deducted from your account when the cashier scans your ID card.
- They can be used at any food station in the CMU's Union City Café or Subs and Sweets, as well as at the Café Connection. At Union City Café, there's plenty to choose from: Pizza Hut Express, Burger King, Sizzling Sensations, Terra Del Sol World's Fare and a Salad Bar. The food is great and can be a fun change of pace!
- You can add additional Dragon Dollars to your account (in \$25 increments) at any time by going to the food service office in Kise.
- Dragon Dollars will carry over from fall to spring semester; but if you don't use them by the end of spring, the balance is forfeited. You can use them to buy six packs of soda, chips and other snack foods so you can always use them up.

Can I change my meal plan? Is there a charge?

- Yes, you can change your meal plan. Plans can be decreased during the first two weeks of each semester after the first week of classes are completed (and during the last two weeks of fall semester for spring semester). You can increase your meal plan at any time. Simply visit the Housing Office in Ballard Hall during regular business hours and fill out a request form. Requests must be in by Wednesday each week to become effective on Friday (the first day of the meal week).
- The first meal plan change is free. Subsequent meal changes cost \$10 for each transaction.
- Changing to a larger meal plan will result in an additional prorated charge (or a small refund if you change to a smaller plan).

Can off-campus students have a meal plan?

We offer off-campus meal plans that include a Dragon Plan, 5 & 10 meals/week and any 90 meals/semester options at an off-campus rate. They can be obtained through the Housing Office.

What if I lose my ID card?

Report a lost or stolen ID card immediately, in person, to staff in the Campus Dining Office. They can deactivate your card at once which will stop unauthorized use of your meal plan and Dragon Dollars. You will need to obtain a replacement card from the Dragon Card Office located in the library room 203A before you will be permitted to use your meal plan. There is a charge for a new ID card.



FAQs Everything You Want to Know

The Contract/ Lease

What is my obligation once I sign my Housing and Dining lease/contract?

Once you've signed the contract you're expected to know and abide by its terms and conditions. The best way to do this is to read your contract. Let your parents read it, too. Some of the key obligations are:

- Understanding and meeting your financial obligations
- Meeting deadlines
- Reading materials we send you during the summer
- Contacting the Housing Office if you have any questions

Is the contract for the whole year?

The contract is for the entire academic year, but you pay one semester at a time. It's similar to an off-campus apartment lease which you sign for 6, 9 or 12 months, but pay rent monthly.

What if I change my mind?

- If you decide not to live on campus before the halls open, you must cancel your contract in writing to the Housing Office. See Contract Section 6A-G for details.
- After moving in, if you leave school for any reason, your contract is terminated. You're charged a pro-rated amount for room rent and meals plus a \$50 administrative charge. See Contract Section 7B for details.
- If you decide to live off campus during the contract term, you will be charged the pro-rated room rent and meal cost, the \$50 administrative charge, a \$200 fee for breaking your contract (instead of being financially responsible for the remainder of your year's lease), and the full semester charge for phone, cable, Readership and hall activity fee. See Contract Section 7C for details.

How do I get a room for next year?

Returning residents' room re-registration for the following year usually occurs in early February. Students receive an information

booklet in late January explaining the process. Returning residents get to choose their hall and room for the next year during this process. When this process is complete, we begin assigning new students.

Your Assignment

How should I fill out the application card?

Be as honest and specific as possible. Identify the three halls you'd most like to live in; explain any allergies or physical conditions that could affect where we should place you; identify any preference you might have for the community types listed. Give us as much information as you can to assist us in placing you where you'll be most comfortable.

Am I guaranteed one of my three residence hall choices?

We make assignments based on the date we receive your completed application. We make every effort to accommodate your preferences as space allows. Returning students' room selections affect space availability. Your completed application makes you eligible for a space in any residence hall, not a specific hall.

What types of rooms are students assigned?

Five types of rooms are available:

- Double rooms house two students; most residence hall rooms are doubles
- Single rooms, for one student, are smaller; about 100 are available.
- Double-as-single rooms are regular, double-sized rooms to which only one student is assigned; these are limited
- Suites accommodate four students, usually older upperclass students, who sign up together. Most suites consist of two bedrooms, a sitting room and a bathroom.
- Neumaier Apartments are reserved for single junior, senior and above MSUM students. The apartment units are two bedrooms, two baths with full kitchen. (Sophomores may be accommodated only if space permits. Juniors and above receive priority.)

How does Housing choose my roommate?

If a roommate choice isn't listed, a roommate is chosen based on the information each student provides on the application card. Smoking preferences, age, new or transfer student and any other lifestyle information each provides is considered.

What happens if I don't get my preferred roommate, hall or room type?

We try to honor your preferences but we can't guarantee your placement because of space limitations. We maintain waiting lists for roommate and hall preferences, and for single/double-as-single room types. Many assignment changes are made over the summer from these lists.

What if I don't get along with my roommate? Who has to move?

Roommates are encouraged to work through and sign a roommate agreement form that's provided at the start of the semester. If this agreement breaks down you can also:

- Ask your Resident Assistant (RA) to help mediate the conflict
- Contact your Area Director for help
- Ask the Housing Office to provide a list of students who need roommates

Usually it's the most dissatisfied student who needs to move. Housing does not compel either roommate to move unless acts of misconduct or violations of the other roommate's rights have occurred.

What happens if my roommate leaves school or makes a room change?

There are several options open to the student in a half-empty room:

- Find a new roommate to move in with you.
- Accept a new roommate assigned by the Housing Office.
- If space permits, request to keep your room a double-as-single and pay the additional cost.

Comparisons



Are you still having thoughts that living off-campus might be better than living in the residence halls? Here are some things to think about and compare as you make your decision.

Off-Campus

Residence Halls

<ul style="list-style-type: none"> • Worrying about bills and figuring out who owes what can be a monthly challenge. 	<ul style="list-style-type: none"> • You receive one bill for the whole semester that includes everything. You are responsible only for what you owe, and can pay this bill in one lump sum or by a payment plan.
<ul style="list-style-type: none"> • Buying groceries, cooking meals and cleaning up afterwards can be almost as hard as finding the time to do it all. 	<ul style="list-style-type: none"> • Campus dining offers you convenience and variety. There are no worries about preparing a meal or cleaning up afterwards, and you can always go to get a quick bite if you are in a hurry.
<ul style="list-style-type: none"> • Often you have to look for something to do and even someone to do it with. 	<ul style="list-style-type: none"> • There is always something to do on campus or in the residence halls themselves. You can walk over to attend an athletic event, take in a play or musical performance, go to a poetry reading, shoot some pool, play a board game in the lounge or play volleyball. Plus, there is always someone around who is up for some fun.
<ul style="list-style-type: none"> • Buying tools, a vacuum, sports equipment or board games puts a dent in your wallet. 	<ul style="list-style-type: none"> • You can check out a variety of things at your front desk, e.g. iron, vacuum, etc. • Your hall desk provides the convenience of retrieving packages and buying stamps.
<ul style="list-style-type: none"> • Driving to campus every day and finding a parking spot can be a hassle; just getting to campus during the winter can be a challenge! 	<ul style="list-style-type: none"> • You have easy access to student services, on-campus computer labs, Comstock Memorial Union and Nemzek Hall facilities, campus activities and more time for involvement in campus life. • You are conveniently located within walking distance of the library and all of the academic buildings. There are no worries about starting your car on cold winter mornings.
<ul style="list-style-type: none"> • Cleaning the bathroom is never fun. 	<ul style="list-style-type: none"> • Bathrooms and common areas are cleaned by our great General Maintenance Workers. However, bathrooms are not cleaned in Holmquist suites or Neumaier Apartments.
<ul style="list-style-type: none"> • You have to pay for a membership to a gym. 	<ul style="list-style-type: none"> • You are within walking distance of Nemzek gym, which is free of cost, but we also have weight rooms for your convenience right in the residence halls.
<ul style="list-style-type: none"> • Living off campus can make some students feel disconnected, isolated or out of the campus loop. 	<ul style="list-style-type: none"> • Resident Assistants and hall staff are available to answer questions, help you meet other people and get connected to MSU Moorhead.