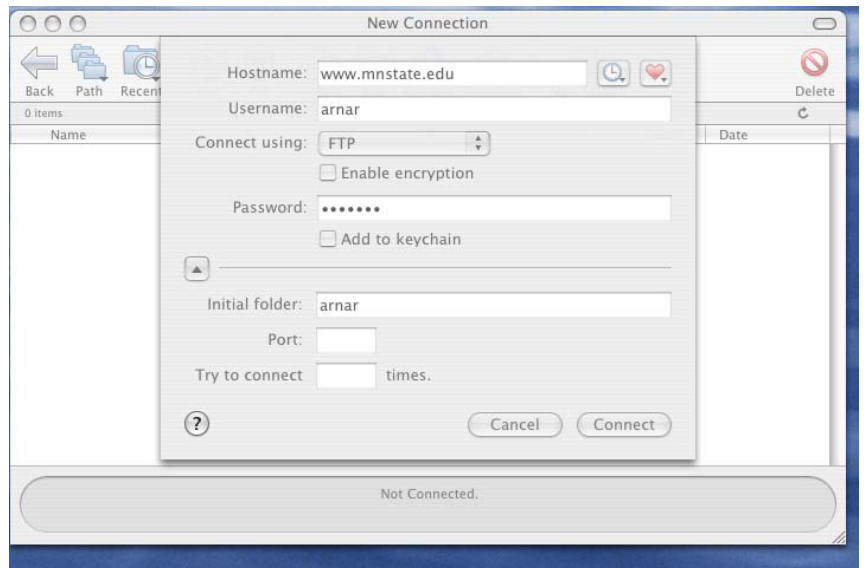


Connecting to www with Fetch

1. Open Fetch
2. Enter the parameters
 - a. Hostname: web.mnstate.edu
 - b. Username: your username
 - c. Connect using: FTP
 - d. Password: your password
 - e. Initial folder: name of your web folder
3. Click Connect
4. You should then get a screen that looks



like this →

You can either drag and drop your files into the folder or you can use the 'Get' or 'Put' options at the top.

