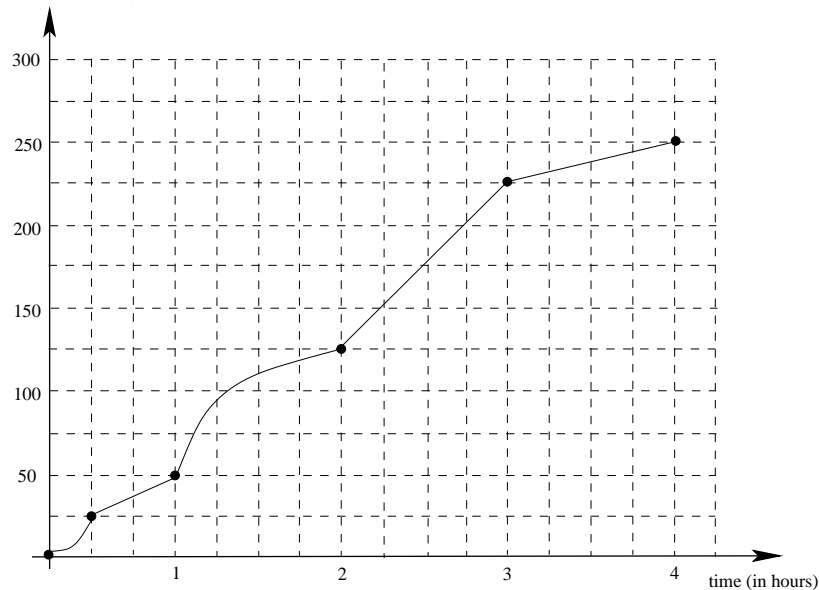


**Example:** The following graph gives the distance of a car driving away from Fargo as a function of time.

distance (in miles)



1. How far away from Fargo is the car after 4 hours?
2. What was the average speed of the car over the entire 4 hour drive?
3. What was the average speed of the car during the first two hours of the trip?
4. What was the average speed of the car during the second hour of the trip?
5. How fast was the car traveling 150 minutes into the trip?
6. How fast was the car traveling 90 minutes into the trip?
7. When, during the trip was the car going the fastest?