

**HOW WOMEN TRAVELED IN FRONTIER AMERICA FOCUS OF NEW BOOK BY MSUM PROF**

"Traveling Women: Narrative Visions of Early America," a new book by Susan Imbarrato, English, will be released early this summer by Ohio University Press.

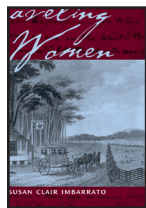


**Imbarrato**

The 256-page historical account closely examines women's travel narratives from 1700-1830, a period marked by the emergence of the stage coach and the coming of the railroads, that trace journeys north and south along the eastern seaboard and west onto the Ohio frontier. From these accounts we learn how women traveled, what they observed, what they ate, why they traveled and what they experienced.

These travelers, she said, wrote compellingly of crossing rivers and mountains, facing hunger, encountering native Americans, sleeping in taverns and confronting slavery, expressing themselves in voices that differed in sensibility from their male counterparts.

Imbarrato has been teaching at MSUM since 1999



and writes and speaks frequently on early American travel narratives and early American women's writings. She is also the author of "Declarations of Independency in 18<sup>th</sup> Century American Autobiography," published in 1998 by the University of Tennessee Press.

Drawing extensively from primary sources, Imbarrato illustrates in her new book that women, traveling with bravado mixed with hesitation, played an important and unique role in the settlement of early America.

"Traveling Women" should be in local bookstores in early June.

**April 10, 2006. Produced by the Publications Office. [tornell@mnstate.edu](mailto:tornell@mnstate.edu). Deadline: Friday noon.**

**DRAGON COACH HELPS SAVE WOMAN CAUGHT IN FLOOD**

MSUM wrestling coach Kennan Spiess helped save the life of a 72-year-old woman who almost drowned in her submerged vehicle during last week's flood.



**Spiess**

The driver of the vehicle, Deloris Olson of Ada, was westbound on County Road 21 near Halstad when she tried to drive through floodwater covering the road. Her car stalled and was swept into the ditch.

Spiess and Norman County Highway Department worker Mark Skansgaard pulled the woman from the car's backseat.

"It was the coldest swim I've ever taken," said Spiess, who saw Olson's car while driving to work from Shelly. "I couldn't believe it... When I saw the car going under, I knew something had to be done, and fast."

All three were treated and released at the Halstad rescue building. The town is about 45 miles north of Moorhead.

**JOIN THE DRAGON FIRE WALK-A-THON**

On Saturday, April 22, an historic fund-raising event will take place on this campus. The 1st annual Dragon Fire Walk for Athletics will combine thousands of small steps into one giant leap for our athletic department.

There is still time to join one of the teams, become an individual walker or just donate. Call 477-2907, 200-5091 or email at [walkathn@mnstate.edu](mailto:walkathn@mnstate.edu). You can also visit our Web site at [www.dragonwalk.com](http://www.dragonwalk.com).



If you would like to be a part of this, but are unable to be a walker, we are looking for volunteers to help out on the day of the event. If you wish to volunteer, call 200-5091 or e-mail [walkathn@mnstate.edu](mailto:walkathn@mnstate.edu)

9 -10 a.m. Registration and breakfast  
10 - 10:15 a.m. Short program  
10:15 - 10:30 a.m. Line up on Masanz track  
10:30 - 11:15 a.m. 1st annual Dragon Fire Walk  
11:15 a.m. Presentation of check and prize drawings.

### ESSAYIST, POET FEATURED IN MCGRATH SERIES APRIL 10

Susan Carol Hauser, an essayist and poet who teaches writing at Bemidji State University, will read from her work at 8 p.m. Monday, April 10 in the MSUM Library Porch as a feature of the Tom McGrath Visiting Writers Series.



Her books on natural history, literary nonfiction and poetry include “Sugartime: The Hidden Pleasures of Making Maple Syrup, with a Primer for the Novice Sugarer” and “Full Moon: Reflections on Turning Fifty.”

### ANIMALS & LITERATURE EXHIBIT, READINGS DOWNTOWN THURSDAY

A group of MSUM students in an “Animals in Art and Literature” course will host an exhibition of artwork and readings from 5 to 7 p.m. Thursday, April 13 at the Red Raven Espresso Parlor, 14 Roberts St., downtown Fargo. It’s free and open to the public.

### GRADUATION TAKES ON A DIFFERENT LOOK

MSU Moorhead’s annual spring commencement on Friday, May 12 in Nemzek Hall Auditorium will be a little different this year. To accommodate all guests, the university has split graduation ceremonies into two parts: at 10 a.m. students graduating from the College of Education & Human Services and the College of Arts & Humanities will receive their degrees; at 2 p.m. students graduating from the College of Business & Industry and the College of Social & Natural Sciences will receive their degrees.

Speaker for the morning graduation is Charles Cheney, superintendent of West Fargo Public School District and MSUM alum who earned an elementary education degree here in 1965. He received a master’s degree in elementary education in 1969 and a Ph.D. in school

administration in 1982, both from UND. He has served the West Fargo Public Schools for over 40 years as a teacher, middle school principal, assistant superintendent, and currently as superintendent.

Speaker for the afternoon graduation is Judge Lisa Borgen, also an MSUM alum who earned a criminal justice degree here in 1993. She was appointed to the bench in Minnesota’s 7th Judicial District by Gov. Tim Pawlenty earlier this year. The 7th Judicial District covers 10 counties in Minnesota, including Clay and Otter Tail. Borgen had been the Clay County attorney since 1999.

### CAMPUS CLEAN-UP DAY MONDAY, APRIL 17

To celebrate Earth Day, the Facilities & Grounds Committee is organizing a campus wide clean-up day on Monday, April 17. The rain date will be April 19. The committee encourages all faculty, staff and students to join in the efforts to help clean up our campus. To volunteer, report to the west side of the Library to receive your work assignment between 11 a.m. and 3:30 p.m. There will be free pizza and a beverage at 12:00 noon for all volunteers. Volunteers should bring their own gloves if possible. Anyone with questions should contact Kathy Abraham at 2156 or Gordy Bergman at 2957.

### LIBRARY HOSTS DEAR DAY EVENT

The Library is participating in a nationwide “drop everything and read” initiative to celebrate the 90<sup>th</sup> birthday of children’s author Beverly Cleary. You are invited to stop by the Library Circulation Lobby on Wednesday, April 12 between 10 a.m. and 4:30 p.m. to listen to volunteers read from children’s books and have a piece of birthday cake. See the list below for times, readers, and book titles.

10:00 - Carol Sibley, Librarian, *Ramona Quimby, Age 8* by Beverly Cleary (excerpt)

10:15 - Barb Hoppe, Instructional Technology, *The Sneetches* by Dr. Seuss

10:30 - Brittney Goodman, Director of Instructional Resources, *Henry Huggins* by Beverly Cleary (excerpt)

10:45 - Veronica Michael, Admissions, *Edward Fudwupper Fibbed Big* by Berkeley Breathed

11:00 - Kathleen Enz Finken, Dean of Arts & Humanities, *Noisy Nora* by Rosemary Wells

11:15 - Peggy Rittenhouse, EECE, *Make Way for Ducklings* by Robert McCloskey

11:30 - Judy Johnson, Early Educ Center, *A Special Trade* by Sally Wittman

11:45 - Casey Gibson, Football Team and CSIS Major, TBA

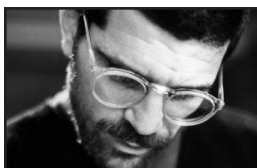
Noon - Drew Waters, Football Team and Athletic

Training/Exercise Science, TBA  
 12:15 - Larry Schwartz, Librarian, TBA  
 12:30 - Steve Grineski, Educ. Foundations, *Blueberries for Sal* by Robert McCloskey  
 12:45 - Doris Walker-Dahlhouse, EECE, *The Heart of a Friendship: An East African Folktale* by H.J. Arrington  
 1:00 - Kristin Larson, Theatre Arts, *Wilfrid Gordon McDonald Partridge* by Mem Fox; *The Giving Tree* by Shel Silverstein  
 1:15 - Dr.Elizabeth Rowse, Corrick Center, *Winnie-the-Pooh* by A.A. Milne  
 1:30 - Kelci Guenther, Volleyball Team and Biology/Pre-optometry Major, *Goodnight Moon* by Margaret Wise Brown  
 1:45 - David Crockett, Dean of Business & Industry/VP, *No, David!* by David Shannon  
 2:00 - Roland Dille, President Emeritus, *Sparky's Education* by Roland Dille; illus. by Laura Nelson (MSUM grad assistant)  
 2:15 - Mark Vinz, English, Selected Poems by Shel Silverstein  
 2:30 - Pam Werre, Librarian, *Ribsy* by Beverly Cleary  
 2:45 - Konrad Czynski (Yadu), Philosophy, CD of "Casey at the Bat" by Ernest Lawrence Thayer  
 3:00 - Konrad Czynski (Yadu), Philosophy, CD of *Mike Mulligan and His Steam Shovel* by Virginia Lee Burton  
 3:15 - Allison Janssen, Track & Field Team and Social Studies Educ/French Major, *Oh, the Places You'll Go!* by Dr. Seuss  
 3:30 - Belle Nelson, Library, *Junie B. Jones and the Yucky Blucky Fruitcake* by Barbara Park  
 3:45 - Travis Dolence, Librarian, *Caps for Sale*, by Esphyr Slobodkina  
 4:00 - Alfonso Scandrett, Director of Athletics, *A Letter to Amy* by Ezra Jack Keats  
 4:15 - Sara Leigh, Advising Support Center, *Harry the Dirty Dog* by Gene Zion  
 4:30 - Thom Tammaro, English, *The Animal That Drank Up Sound* by William Stafford; *Ox-Cart Man* by Donald Hall

#### FOUR MAMET PLAYS FEATURED IN MSUM THEATRE SIGNATURE SERIES

MSUM's Theatre Arts program launches its first Signature Series next week featuring the work of David Mamet.

The Signature Series also features the work of MSUM theatre arts students and faculty working together as directors, actors and designers, allowing students a deeper, more intense theatre training.



**Mamet**

Pulitzer Prize-winning playwright David Mamet is one of a handful of American playwrights whose work has found almost as much success on the screen as it has on the stage. Mamet draws upon his personal experiences to write spare, dark dramas littered with characters who become victims of the various myths of American culture: economic success, romance, and family.

Tickets are: Adults \$8, Faculty/Staff/Seniors \$6, Tri-college \$5, MSUM free with ID. Call the MSUM Box Office for more information, 477-2271

*Showing Wednesday and Friday, April 19 and 21 starting at 7:30 p.m. on the Roland Dille Center for the Arts Gaede Stage:*

#### **Sexual Perversity in Chicago**

Directed by Cole Flaatt

This play spans a couple of months in the lives of four young people, Bernie and Joan, seemingly sexually knowledgeable but who really don't know the score; and Danny and Deborah, quieter and less assertive. Yet it is the latter two who come together, if only briefly. Their courtship is funny and fretful, but it is they, not Bernie and Joan, who make love. In the end, Deborah is back rooming with Joan and Danny is back girl watching with Bernie.

#### **The Woods**

Directed by Erin Wencil

Ruth and Nick are two young lovers who spend a night in a cabin in the woods. During the play a whole anatomy of the relations of men and women in love is laid out. Both are euphoric, but love takes them different ways. The sense of being loved turns her outward; she talks nonstop about many different things surrounding them, but Nick does not seem to care; all he sees is Ruth and he takes her inside to make love. Later, practically all is destroyed between them. He turns fretful, fearful; after desire is appeased she becomes the thinnest wisp against a threatening world to him. Her efforts to maintain their kingdom disintegrate as he turns in on himself. The closeness between them conceals an immense distance; they have a violent quarrel and she prepares to leave. Suddenly they cling to each other without joy or hope, simply from need.

*Showing Thursday and Saturday, at 7:30 p.m. April 20 and 22 on the Roland Dille Center for the Arts Gaede Stage:*

#### **Edmond**

Directed by Ben Mattson

This play has been described as a sort of reverse image morality play; whereas Everyman went on a journey in search of his salvation, Mamet's

everyman (the title character) here descends into the maelstrom of big city degradation in search of sexual gratification. "Edmond describes a world in which morality is tangential, in which there seems to be no moral feelings, only brutal, cruel ones, no concern for others, only selfishness and self interest." Women's Wear Daily

### **Oleanna**

Directed by Craig Ellingson

A college student, Carol drops by her professor's office in an effort to gain his help to do better in class. As the first meeting progresses, the two discuss the nature of understanding and judgment in society, as well as their very own natures and places in our society. When next they meet we find that a report has been filed to the tenure committee. Carol has joined a "group" and has decided that John sexually harassed her during their first meeting. Their second meeting dissects the first; every word, every nuance of the first meeting has been twisted into something else. Or has it? John's unsuccessful attempts to convince Carol to retract her accusation escalate to a more dangerous level. The third meeting, one the court officers warned against, climaxes violently leaving John and Carol both physically and emotionally devastated.

### **Attention Students and Advisors: IMPORTANT INFO ABOUT CLASSES OFFERED THROUGH MATHEMATICS LEARNING CENTER IN FALL 2006 Elementary Algebra (Old M090)**

Four sections of Elementary Algebra will be offered on our campus Fall 2006. They will meet for 50 minutes, 4 days/week for lecture/lab (MTHF) at 8, 9, 11, or 12. Students should be sure to reserve the time slot for the class as **registration will begin after noon on Friday, April 7th** for these 4 sections through MSCTC/Gateway. Register before Thursday, April 20, to assure yourself of a place in your desired section.

Students should report to the Gateway House, directly across from Owens Hall, 803 11th Street. They will fill in a special registration form. The information will be processed within two days, and the students will be assigned an MSCTC ID#.

They, then, can use the computers at the Gateway House to register on-line. MSUM students should register for those sections offered on our campus through the Math Learning Center. The course name and number is M090, Introductory Algebra. The sections

offered at MSUM are numbered:

- #001151 - 8 a.m.
- #001152 - 9 a.m.
- #001153 - 11 a.m.
- #001154 - Noon

### **Intermediate Algebra (Old M099)**

There are currently at least 8 sections of Intermediate Algebra on the Fall 2006 schedule of classes, the only difference is that they are now listed under PDEV 100. These classes also meet for 50 minutes, 4 days/week (MTHF), with at least one section offered each hour from 8 a.m. to 2 p.m. This means the credits now count toward the student's total credits needed for graduation, but are not applicable toward liberal studies requirements. It also means the grade will be included in the student's GPA.

For more information contact Barb Rath, director of the Mathematics Learning Center, at 477-5835; MacLean 351; [rathb@mnstate.edu](mailto:rathb@mnstate.edu).

### **APRIL/MAY STUDENT STRESSORS**

It is normal for students to experience the following during April/May:

- \* Frustration and confusion develop because of decisions necessary for pre-registration.
- \* Concern over declaring a major.
- \* Anxiety because papers and exams are piling up.
- \* Mounting academic pressures force some students to temporarily give up.
- \* Social pressures: everybody is bidding for your participation at trips, banquets, and picnics.
- \* Anxiety develops because of the realization that the year is ending.
- \* Senior panic about jobs (lack of them).
- \* Depression over leaving friends and/or love relationships.
- \* Finals pressure and anxiety.
- \* Pressure to make summer plans: job, whether to move home or get an apartment, take summer classes.
- \* Concern about connecting with high school friends and the status of those relationships.

If you know of a student struggling with these or other issues, please have them call or stop by the Counseling & Personal Growth Center in Bridges 260, 477-2227.

### **MSUM JURIED ART EXHIBIT APRIL 10-25**

MSUM's annual juried student art show will be April 10-25 in the Roland Dille Center for the Arts gallery. A reception for the artists will be from 4-6 p.m. Wednesday, April 12.

This year's juror is Kathryn Lipke Vigessa, a visual artist who lives in Vermont.

As a teacher, visiting artist, lecturer and judge, Vigessa has traveled throughout North and South America, Europe and Japan. Since 1977 she has been a professor at Concordia University, Montreal, Quebec, and for the past 10 years has been a professor of sculpture at the University of Lapland in Finland.

Vigessa has grown into an internationally successful and respected artist for her dynamic work in a wide variety of mediums. She combines techniques of papermaking, sculpture, photography, video and more.

Gallery hours are 9 a.m.-5 p.m. Monday and Friday; 11 a.m.- 5 p.m. Wednesdays; 9 a.m.-6 p.m. Tuesday and Thursday; and 1-3 p.m. Saturday.

### **APAC MEETS TUESDAY, APRIL 11**

The Academic Policy Advisory Committee is scheduled to meet on Tuesday, April 11 at 3:00 p.m. in the Dragon Den. The agenda:

1. Approval of the 4/4/06 APAC Minutes\*
2. New Course Proposals  
Health and Physical Education Department  
(Tabled 4/4/06)  
HLTH 122: Alcohol and College Life (1 cr)
3. Policies  
Require HLTH 122: Alcohol and College Life (1 cr) as a graduation requirement for new entering freshman effective Fall 2006
4. Liberal Studies\*  
Outer Cluster Course Policy.  
Doubling Counting of Major Rubric Courses within the Dragon Core.

\*indicates item can be viewed electronically at: <http://www.mnstate.edu/acadaff/APAC/2005-2006APAC/APACAgendasMinutes.htm>

### **GUEST ARTIST AT MSUM APRIL 10-12**

Aristotle Georgiades, a sculpture faculty member at the University of Wisconsin, Madison, will be on campus April 10-12 conducting critiques for art students and presenting on his work.

Georgiades will also create an installation in the 280-square foot gallery located in the sculpture studio in the Roland Dille Center for the Arts.

His slide presentation will be at 6 p.m. Tuesday, April 11 in the Center for the Arts Fox Recital Hall. It's free and open to the public.

Georgiades says about his work: "My work is often based on the history of economics of the community, incorporating architectural elements and images of tools, furniture, and other utilitarian objects. I work in wood and mixed media, and most of my work is human-scale or larger. I am motivated in the search for the 'American Dream,' both as an idea and as the real experience of my family who immigrated to the United States seeking a better life. My work blends a rigorous attention to craft with an interest in these social and cultural concerns."

### **APAC MINUTES**

**(March 21, 2006)**

Members present: Midgarden, chairperson, Blunsom, Brisch, Cagle, Gess, Goodman, Gunaratne, Haak Aarness, Hammerschmidt, Hill, Sanderson, Wheeler.

Absent: Conteh, Crockett, Enz Finken, Frederick, Jeppson, McGillivray, Parsons, Schmit, Strong.

#### **1. Approval of the 3/7/06 APAC Minutes**

Sanderson moved. Hill seconded to approve the 3/7/06 APAC minutes.

Motion carried unanimously.

#### **2. Minor Changes:**

##### **Languages and Cultures Department**

Course Numbering changes:

Lang 441/541: Methods & Materials in Teaching Foreign Language I (4 crs) to Lang 471/571: Methods & Materials in Teaching Foreign Language I

Lang 442/542: Methods & Materials in Teaching Foreign Language II (4 crs) to Lang 472/572: Methods & Materials in Teaching Foreign Language II

There were no concerns; approved as announced (effective Fall 2006).

#### **3. New Course Proposals**

##### **Communication Studies, Film Studies, & Theatre Arts Department**

(The Liberal Studies Committee has approved this course in Competency #6: The Humanities)

David Wheeler was present to answer questions.

Brisch moved. Haak Aarness seconded to approve the new course (effective Fall 2006):

Film 180: Understanding Movies (3 crs)

Motion carried unanimously.

#### **4. Program Change**

##### **Counseling and Student Affairs Department**

Wes Irwin was present to answer questions. He indicated this request will put the department in line with CACREP guidelines. There are no curriculum

changes.

Cagle moved. Gess seconded to separate College Counseling into its own program (effective Fall 2006).

Motion carried unanimously.

## **5. Liberal Studies**

### **Competency Area 10 – People and The Environment (Tabled on 1/12/06)**

Ellen Brisch was present to answer questions.

The only change is that the final bullet became the second bullet. Bette Midgarden passed around a handout with suggestions for implementation prepared by Dennis Jacobs.

Cagle moved. Gunaratne seconded to remove the motion to approve Competency Area 10 – People and the Environment from the table.

*PEOPLE AND THE ENVIRONMENT – (MnTC #10) - Approved: LSTF 12/15/05, Revised 3/1/06  
Goal: To develop students' understanding of the concept of sustainability and the challenges we face in responding to environmental variables and resolving environmental problems. Students will examine how societies and the natural environment are intimately related. A thorough understanding of ecosystems and the ways in which different groups interact with their environments is the foundation of an environmentally literate individual.*

**STUDENT COMPETENCIES: MSUM STUDENTS WILL BE ABLE TO:**

*Explain the concept of sustainability.*

*Identify and evaluate possible pathways to a sustainable future and demonstrate an awareness of the tradeoffs necessary to achieve a sustainable future.*

*Identify the structure, function, and processes of ecosystems (ecosystems include environmental systems such as climatic, hydrologic, soils, social, and biological systems).*

*Assess and analyze the environmental problems of a technological society using the framework of well-founded physical and biological principles.*

*Describe the relationships between environments and socio-cultural groups, and identify how natural resource challenges are being addressed by the social, legal, economic, political, cultural, and religious systems within societies.*

*Understand how socio-cultural variables affect the ways in which environments are perceived and managed, and the ways in which people or societies react to environmental challenges.*

Motion carried unanimously.

*Discussion:*

Some members wondered why religious systems were included in this competency. Brisch explained that someone could develop a course that discussed the relationship between religious views and exploitation of the land, for example.

An instructor with a course in this competency would not be teaching biology; however, they would be required to discuss environmental facts. An example would be knowing how much water is needed in a particular area to sustain life, and what would happen if it was all used up.

Brisch explained that the group working on this competency felt other areas of study such as art, film, etc., could add positive perspectives about the dangers of depleting the environment.

There was concern that instructors not knowledgeable in science would be teaching science and may be teaching material incorrectly. Departments will have to be careful in creating courses so that a particular course can continue to be taught even if the faculty members change. Assessment will also help to catch any problems. Team taught courses are a great idea, but faculty have to figure out how they can each teach just half of the course. One suggestion was for a course that is taught 2 days a week, one faculty person teach one day and the other teach the other day. Another suggestion would be to cross-list the course and teach two sections so the two faculty members can teach at the same time.

This is an interdisciplinary competency area. Even if a biology person is teaching, they must bring in material beyond a standard science course.

Motion to approve Competency Area 10 – People and The Environment carried unanimously.

### **Definition of Science Lab Experience**

Haak Aarness moved. Blunsom seconded to approve the Definition of a Science Lab Experience.

*Discussion:*

The goal behind this definition is to provide students a hands on scientific experience in the appropriate scientific discipline, not be just an observer.

Teaching assistants will be in the classroom to help, but they will not supervise students.

The idea is to give all students a genuine hands on experience.

Students will be required to do a report of some type on their experience.

Hill moved. Brisch seconded to amend the motion on the table.

Motion carried unanimously.

*Suggested amendments:*

In the first sentence, participation in the process should be changed to participation in a process.

In the second sentence, after Students will have at least 12, add, "faculty supervised hours in the laboratory or field".

Delete the word "and" at the end of the fourth bullet and add periods after all the bulleted statements.

Delete the word “and” before developing conclusions in the last sentence, and add, “and communicating results” after conclusions.

#### **LAB EXPERIENCE - LSTF APPROVED 2/22/06**

*Description of a minimum Lab Experience for Natural Science Courses:*

*A laboratory experience gives students an opportunity to experience science by participation in a process appropriate to their field. Students will have at least 12 faculty supervised hours in the laboratory or field during the semester to develop and/or perform scientific experiments or other approaches. Students will participate in at least three of the five approaches:*

*Applying the scientific method in either the lab or field.*

*Learning a scientific technique.*

*Learning the proper use of scientific equipment.*

*Interpreting empirical data.*

*Analyzing experimental results.*

*Applying the scientific method includes observation, hypothesis development, experimental design, implementation, data collection, data analysis, developing conclusions, and communicating results, in a manner consistent with disciplinary practice.*

Motion to approve the amended Definition of a Science Lab Experience carried unanimously.

#### **Policy on Content Prerequisites**

Cagle moved. Gunaratne seconded to approve the Policy on Content Prerequisites.

*Discussion:*

This policy would only allow Foundation Liberal Studies (LS) courses as prerequisites. This proposal means that specific disciplinary content courses cannot be required.

Yet to come from the Liberal Studies Task Force (LSTF) is a recommendation that students will be allowed to count one course in each cluster (Inner, Middle, Outer) in their major rubric. Some courses need prerequisites, so by indicating that no prerequisites can be required, some departments will not include courses in the Middle and Outer Clusters. Students might then find the course offerings limited.

The LSTF does not want to put students in a bind by requiring them to have to backtrack and take an extra class if they want to take a 300-level course in the LS program.

The concern is that a student needs some prior disciplinary knowledge before being able to take an upper level course and this policy would eliminate that requirement. The policy states that a student must have completed the Foundation courses along with two Middle Cluster courses in different areas.

Motion defeated unanimously.

Blunsom moved. Cagle seconded to recommend the following:

#### **Extending and Applying Inner Cluster Foundation Course Student Learning Outcomes to Middle Cluster Courses**

*Policy: Middle Cluster courses that do not include a laboratory or studio experience must extend and apply the student learning outcomes of two or more Inner Cluster Foundation Courses. Courses with a laboratory or studio experience may extend and apply the student learning outcomes of two Inner Cluster Foundation Courses, but must extend and apply one of the Inner Cluster Foundation Courses. In addition, Middle Cluster courses may require one additional Inner Cluster course as a prerequisite.*

Motion carried unanimously.

#### **Outer Cluster Courses – Relationship to Foundation and Middle Cluster Courses.**

DEFERRED to a later APAC meeting.

#### **Dragon Core Framework**

Hammerschmidt moved. Haak Aarness seconded to adopt the Dragon Core Framework.

*Discussion:*

Students who test out of classes will be moving into the Middle Cluster courses sooner.

Some felt that 100-level courses should not be in the Middle Cluster.

The Minnesota Transfer Curriculum requires a science course with a lab so some science courses will have to be available at the 100-level even though the course content may be at the 200-level. 100-level courses in the Middle Cluster will still have to draw on the student learning outcomes of two Foundation courses.

Inner Cluster 100-level courses can be distinguished from Middle Cluster 100-level courses because they do not have to extend and apply Foundation-level student learning outcomes.

Blunsom moved. Sanderson seconded to amend the motion on the table to approve the framework without approving course level definitions in the Middle and Outer Clusters.

Motion, as amended, carried unanimously.

Meeting adjourned at 4:58 p.m.

Jo Berg

#### **MODEL UN STUDENTS TO COMPETE IN ARROWHEAD REGIONAL CONFERENCE**

Nineteen students from the MSUM Model UN Organization along with their faculty advisor, Dr. Andrew Conteh, will be competing in the 30<sup>th</sup> Annual Conference in Brookings, S.D., April 20-23.

Students at the competition represent countries from member states of the United Nations. They present and debate resolutions pertaining to the concerns of their selected country. The conference is one of the largest Model UN conferences in Central North America. Each year the conference is held at a different university/college in either Canada or the United States. There are traditionally 250-300 delegates that participate from over 25 universities and colleges in North America.

#### MISCELLANEA

\* **Steven Street** and **Charles Howell**, MSUM School of Teaching and Learning, and Boyd Bradbury from Waubun Public Schools, presented "P-16 Partnership: Customizing an On-Site Masters Program for an Individual School District" at the annual meeting of the Minnesota Association of School Administrators in Bloomington.

\* **John Benson**, EECE, presented an Illustrated Paper at the Association of American Geographers conference in Chicago March 8. The title of his poster was "Mazingira Magumu: Influences of Geographic and Local Factors on School Success and Failure in Tanzania." The poster was based on his sabbatical research in Tanzania during Spring Semester 2005.

\* **Steve Grineski**, Foundations of Education, presented a paper at the 49th Annual Conference of the National Association for Laboratory Schools held at Columbia University. The paper was titled, "Looking back and looking forward: A case study of the Minnesota State University Moorhead Campus School."

\* **Chang-Seong Hong**, Philosophy, had his paper "A Reductionist Refutation of Kripkean Dualism" accepted for publication by *International Journal of the Humanities*.

\* **William Kenz**, Library, had a review of the book "Federal Regulatory Research: Selected Agency Knowledge Paths" (Haworth Press, 2003) published in the journal *Government Information Quarterly* (Volume 22, Issue 4, 2005).

\* **Travis Dolence**, Library, is a regional editor for the recently published book, "Guide to U.S. Map Resources" edited by Christopher J.J. Thiry (Scarecrow Press, 2006). This book has been received in the MSUM library and will soon be on the shelves.

#### CLASSIFIEDS

\* **For Sale: 1998 17.5 Bayliner Runabout**

- Mint condition - used 2 summers - approximately 100 hours
- Custom snap cover
- Mercury Cruiser 135 HP Motor
- Escort Trailer

---

- Winterized and stored indoors in the off-season

- \$7,500
- ext 2244

or email [hilldi@mnstate.edu](mailto:hilldi@mnstate.edu) for more information and a photo

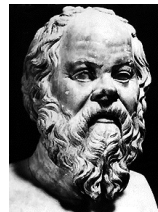
\* Remember Les Johnson ... well, his house is for sale again. A hobby farmer's dream: 10 acres, 10 minutes from town in Glyndon, MN! It could be yours!!! Call Angie at 790-3815 or visit [www.angiemann.com](http://www.angiemann.com)

---

## Want to discuss life's big questions?

Thursday, April 13  
1-2 p.m.  
MSUM · CMU 101

Christopher Phillips author of *Socrates Café* and



*Six Questions of Socrates*, and his wife, Cecilia Chapa Phillips, have traveled the globe facilitating hundreds of Socrates Cafés, in which ordinary people gather in ordinary places to ask questions—and questions about questions. He challenges them to consider: What is virtue? Good? Justice? Piety? Courage?

This Socrates Café is sponsored by MSUM'S Dille Fund for Excellence, the College of Arts and Humanities, the Visiting Scholars Program, and North Dakota State University's Cooperative Sponsorship Committee, College of Arts, Humanities and Social Sciences, Department of History and Religion, and the Northern Plains Ethics Institute.

The two will also present the Socrates Café Thursday, April 13 from 7 to 9 p.m., room 114 at the NDSU Downtown Campus, 650 NP Avenue, Fargo. The title of their talk: "A Modern-Day Journey of Discovery Through World Philosophy."

---

## Technology & Consumer at Krispy Kreme WHAT MAKES THOSE DOUGHNUTS TASTE SO GOOD?

What makes Krispy Kreme taste so good?

Carolyn de la Peña, author of *The Body Electric: How Strange Machines Built the Modern America*, says it has much to do with the look

of Krispy Kreme stores as it does with the doughnuts they produce. She'll explain that during a 7 p.m. lecture Monday, April 24 in Minnesota State University Moorhead's Center for Business 109.

Peña, an associate professor of American Studies at the University of California at Davis, will present a tour of Krispy Kreme's mechanized interior spaces over three eras: the 1930s to 1950s, the 1960s to 1970s, and the post 1990s.



Each of these interior design eras created a particular view of industrial machines, allowing consumers to experience a relationship between themselves and the machines of industrial progress.



**Peña**

Her talk illustrates that connection, demonstrating that Krispy Kreme's success—and failure—may be driven more by culture than by taste.

For questions, contact Maureen Reed at MSUM's American Studies department, 477-5054.

The lecture, free and open to the public, is sponsored by the university's American Studies Program and Visiting Scholars Committee.

### **BOOKSTORE ROUTE WALK SUPPORTS DRAGON FIRE WALK-A-THON**

The MSUM Boostore will donate \$3 for every six site routes walked through campus, up to \$5,000, during the week of April 17-21 in support of the Dragon Fire Walk for Athletics.

Just visit the following campus sites between 8:30 a.m. and 4 p.m., acquire official stamps from each site, and bring the completed flyer back to the bookstore.

- \* Nemzek (Athletic Office at the south end of the building).
- \* The School of Business (2nd floor office, west end of the Center for Business).
- \* Speech/Languages/Hearing Sciences building, Grier Hall.
- \* Hendrix Health Center.
- \* Early Education, Lommen 214.
- \* Mass Communications.

The Bookstore challenge walk is open to anyone on or off campus. Anyone can participate more than once.

### **LIBRARY TALK APRIL 20 LOOKS AT LIFE OF MINNESOTA'S FIRST GOVERNOR**

Rhoda Gilman, author of "Henry Hastings Sibley, Divided Heart", will be the guest speaker at the 2006 Library Lecture at Livingston Lord Library on Thurs., April 20 at 4 p.m. in the Library Porch.

Gilman will discuss the life and historical background of Minnesota's first governor and his connection to the southern Red River Valley.

### **Don't forget this week:**

### **300 MSUM STUDENTS PRESENT RESEARCH AT 8TH ANNUAL ACADEMIC CONFERENCE**

What would happen to Sabin, Minn., if it were hit by a nuclear warhead? Curious about the physics of using your head in a soccer game? How can you tell if a corn chip is made from genetically modified seed? Who is the real Scorpion King? And why do life saving drugs cost so much?

Those are some questions students address in MSUM's eighth annual Student Academic Conference scheduled from 1 to 3:50 p.m. Wednesday, April 12 throughout the university's student union.

More than 300 students will present research on 250 projects that day. It's free and open to the public.

The purpose of the afternoon event is to showcase the work and talent of MSUM students through presentations, posters, and creative works.

The conference keynote speaker is Tammy Miller, chief executive officer for Border States Electric Supply, who earned both her undergraduate accounting degree and MBA from MSUM. Her address, on "Communication, Problem Solving and Collaboration: Skills for Business, Skills for Life," starts at 11:50 a.m. as part of a conference luncheon in the student union ballroom, followed by a student panel at 12:20 p.m. on the importance of student research.