

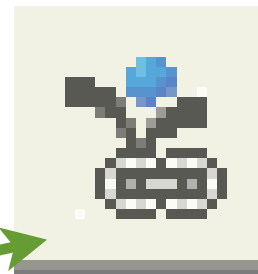
To create a link from LiveText from one LiveText document to another LiveText document: Click on “edit” for the section where you’d like the link.

LiveText edu solutions™
MyDesk ExhibitCenter Forms Hi, Heather Sand | Saturday, October 25, 2008
Materials > next page > Edit Document | Submit for Review | Share | More Actions...
Your Name Here - Capstone show properties
by Heather Sand
Overview
OVERVIEW
ED 205 Learning Project/Unit
Student Communication
Parent Communication
Assessment
Evidence of Standards
Capstone Unit
History - Dispositions
History - Demographics
History - Evaluations
Professional Information
Assignment Storage
PORTFOLIO DEVELOPMENT
This portfolio will be assessed at several intervals throughout your educational experience at MSUM. Each time it is submitted for review, it will be scored with a specific rubric which will be shared with you by your instructor. It begins in ED 205 with the Learning Project, Parent Communication, and Student Communication pages; followed by completion of the Assessment page during your assessment course; and finally submissions of the remaining items during your final year. This portfolio is your internet space to keep your documents safe throughout your education, use it freely even when it is not specified by course instructors. (Review the "Evidence of Standards" and "History" sections.)
Portfolio Assessment: refers to a purposeful, continuous, varied collection of authentic student work across a range of content areas that exhibit the student's efforts, achievements, and progress over a period of time.
Portfolio: an organized, goal-driven documentation of your professional growth and achieved competence in the complex act called teaching.
edit page
edit

Type a name for the link in the space. Highlight the name of the link.

Document: Your Name Here - Capstone
Page: Overview
Edit Section: Portfolio Development

Section title: Portfolio Development
Format Normal Font Size
ED 205 Project
This portfolio will be assessed at several intervals throughout your educational experience at MSUM. Each time it is submitted for review, it will be scored with a specific rubric which will be shared with you by your instructor. It begins in ED 205 with the Learning Project, Parent Communication, and Student Communication pages; followed by completion of the Assessment page during your assessment course; and finally submissions of the remaining items during your final year. This portfolio is your internet space to keep your documents safe throughout your education, use it freely even when it is not specified by course instructors. (Review the "Evidence of Standards" and "History" sections.)
Portfolio Assessment: refers to a purposeful, continuous, varied collection of authentic student work across a range of content areas that exhibit the student's efforts, achievements, and progress over a period of time.
Portfolio: an organized, goal-driven documentation of your professional growth and achieved competence in the complex act called teaching.
Two Types of Portfolios:
• Working Portfolio: contains documents you have carefully selected to portray your professional growth.
Image: DSCF3639.jpg edit »
Caption:
Display size: Original (2848x2136)
Placement:



Click on the chain link with the LiveText symbol. Select the LiveText document that you’d like to link by checking the box and clicking “Insert”

https://www.livetext.com - Link Chooser
Insert LiveText Link
Materials: My Work
(showing 1-7 of 7) |< |> |>> |<< |< |> |>>
Insert
Title
Demographics
Evidence of Standards Assessment - Your Name Here
Heather Sand
My Name Here
Test Pilot
Test Pilot
Your Name Here - Capstone

The highlighted words will become blue and will now function as a link to the other document.

Click Save and Finish.