

Name _____

Math 304 Lab for Sections 10-1 & 10-2

Copy the class eye color data from the board to the table below:

Blue	Brown	Green	Hazel

Create a circle graph of the data above (Using your compass and protractor) with a title and labels necessary to make the graph complete.

List what prior knowledge is needed for a student to complete this task:

Use the class' eye color for the data for the graphs to be created on the computer

Go to <http://illuminations.nctm.org/ActivityDetail.aspx?ID=204>

(This is URL is linked from our course website in Unit 1)

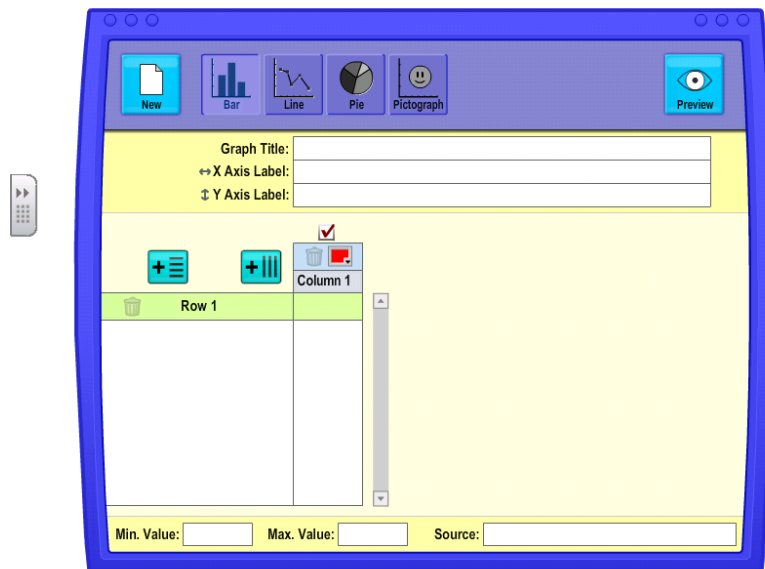
Fill in the Graph Title, X-Axis Label, Y-Axis Label, and Source (Your Name)

Create and print each of the following: Bar Graph, Pictograph, and Circle Graph

The Basic Data Grapher can be used to analyze data with bar graphs, line graphs, pie charts, and pictographs. You can enter multiple rows and set(s) to display in a graph, and choose the type of representation.

+ Instructions

+ Exploration



How does prior knowledge change when students make their graphs only on the computer?

What are two **questions** you can ask students that would help them make connections when they graph the data sets on the computer?
