

North Dakota

nd.gov Official Portal for
North Dakota State GovernmentNorth Dakota
CENTERS

Related Links

[Subscription Services](#)[Code Definitions](#)[Digital & Image Logs](#)[Map This Well](#)[Get This Well File](#)

Get Well Scout Ticket Data

Enter File Number: Or Enter API Number: [Get Scout Ticket Data](#)NDIC File No: **9033** API No: **33-007-00767-00-00** CTB No: **109033**Well Type: **OG** Well Status: **PA** Status Date: **7/21/2007** Wellbore type: **HORIZONTAL****RE-ENTRY**Location: **NESW 4-142-102** Footages: **1393 FSL 1520 FWL** Latitude: **47.142311** Longitude: **-103.618585**Lateral 1 Start Coordinates **26 N 29 W** From Wellhead, End Coordinates **1003 N 960 E** From WellheadSide Track 1 Start Coordinates **630 N 603 E** From Wellhead, End Coordinates **2658 N 2547 E** From WellheadSide Track 2 Start Coordinates **2407 N 2298 E** From Wellhead, End Coordinates **3278 N 3134 E** From Wellhead[Get Survey Data](#)Current Operator: **SUMMIT RESOURCES, INC.**Original Operator: **DIAMOND SHAMROCK CORP.**Current Well Name: **CENEX FEDERAL 23-4**Original Well Name: **CENEX FEDERAL #23-4**Elevation(s): **2471 KB** Total Depth: **15017** Field: **ROOSEVELT**Spud Date(s): **10/23/1982 8/11/2005**Digital or Image Log(s) available: **BCS** 1.4MB, **CBL** 3.9MB, **CIL1** 713KB, **CIL2** 476KB, **CND** 2.9MB, **DLL** 3.2MB, **DTS** 4.1MB, **DTSM1** 812KB, **DTSM2** 12.5MB, **DTSM3** 389KB, **DTSM4** 174KB, **DTSM5** 2.9MB

Formation Tops

K-GH 4424 K-M 4907 K-N 5051 K-IK 5321 J-S 5804 J-R 6240**T-S 6747 PM-MK 7165 PM-OP 7210 PM-BC 7510 PN-T 7844 M-BS 8113****M-KL 8372 M-MD 8520 M-MDR 8977 M-MDLS 9030 M-MDFA 9210 M-MDLP 9684****MD-B 10445 D-TF 10452 D-BB 10620 D-DP 10694 D-SR 11006 D-DB 11160****D-PE 11210 S-I 11477 S-CL 11637 O-G 12180 O-ST 12254 O-RR 12327**Casing String(s): **9.625" 3989' 5.5" 12722'**

Completion Data

Pool: **BAKKEN** Perfs: **10434-10450** Comp: **4/13/1991** Status: **PNA** Date: **10/18/2005**Spacing: **SW**Pool: **BIRDBEAR** Perfs: **10303-15017 OH** Comp: **10/18/2005** Status: **PNA** Date: **7/21/2007** Spacing: **SEC**Pool: **DUPEROW** Perfs: **10809-10948G** Comp: **2/14/1983** Status: **PNA** Date: **4/13/1991**Spacing: **W2**Pool: **RED RIVER** Perfs: **12394-12535 G** Comp: **2/14/1983** Status: **DRY** Date: **11/6/2004**

Cumulative Production Data

[Get Production History](#)Pool: **BAKKEN** Cum Oil: **32541** Cum MCF Gas: **30295** Cum Water: **21547** [Show](#)[Performance Curve](#)

Pool: **BIRDBEAR** Cum Oil: **6483** Cum MCF Gas: **9827** Cum Water: **1688** [Show Performance Curve](#)

Pool: **DUPEROW** Cum Oil: **356777** Cum MCF Gas: **246901** Cum Water: **183111** [Show Performance Curve](#)

Production Test Data

IP Test Date: **2/14/1983** Pool: **DUPEROW** IP Oil: **803** IP MCF: **915** IP Water: **25**

IP Test Date: **4/13/1991** Pool: **BAKKEN** IP Oil: **113** IP MCF: **58** IP Water: **41**

IP Test Date: **10/18/2005** Pool: **BIRDBEAR** IP Oil: **150** IP MCF: **175** IP Water: **27**

DST: **12535-12558** Recovery: **1000' GAS CUT OIL, 7000' HGC WATER & OIL - SAMPLER:**

NO SAMPLER-CASED HOLE DST

Cores and Samples

[View Micrographs](#)

Type: **C** Top: **10915** Bottom: **10951**

Type: **C** Top: **12514** Bottom: **12539**

Type: **C** Top: **12539** Bottom: **12570**

Type: **DC** Top: **7000** Bottom: **8100**

Type: **DC** Top: **8100** Bottom: **9000**

Type: **DC** Top: **9000** Bottom: **10300**

Type: **DC** Top: **10300** Bottom: **11300**

Type: **DC** Top: **11300** Bottom: **12720**

Type: **TS** Top: **0** Bottom: **10919** Formation: **D-DP**

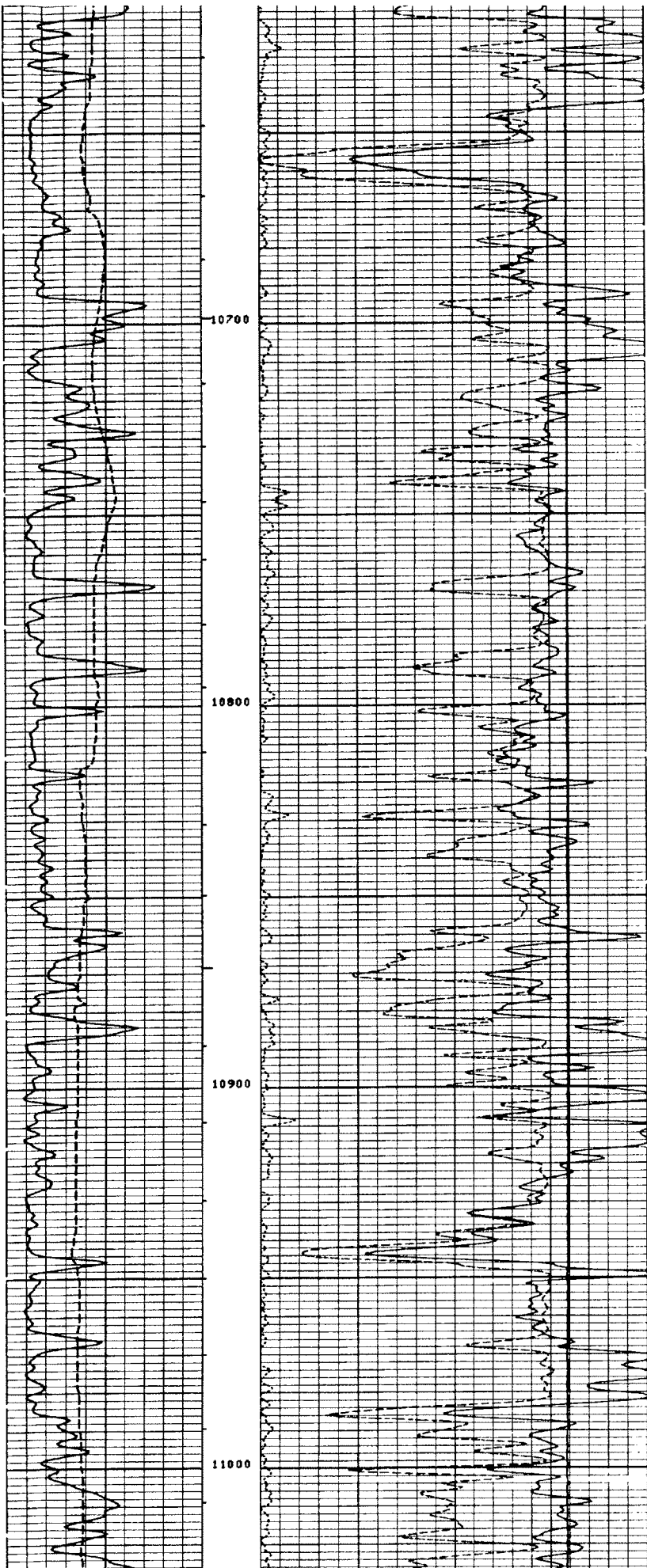
Type: **TS** Top: **0** Bottom: **10929** Formation: **D-DP**

Type: **TS** Top: **0** Bottom: **10938** Formation: **D-DP**

Type: **TS** Top: **0** Bottom: **10943** Formation: **D-DP**

Type: **TS** Top: **0** Bottom: **10944** Formation: **D-DP**

[\[DMR Home\]](#) [\[Disclaimer\]](#) [\[Privacy\]](#) [\[Security\]](#) [\[Feedback\]](#)



9033