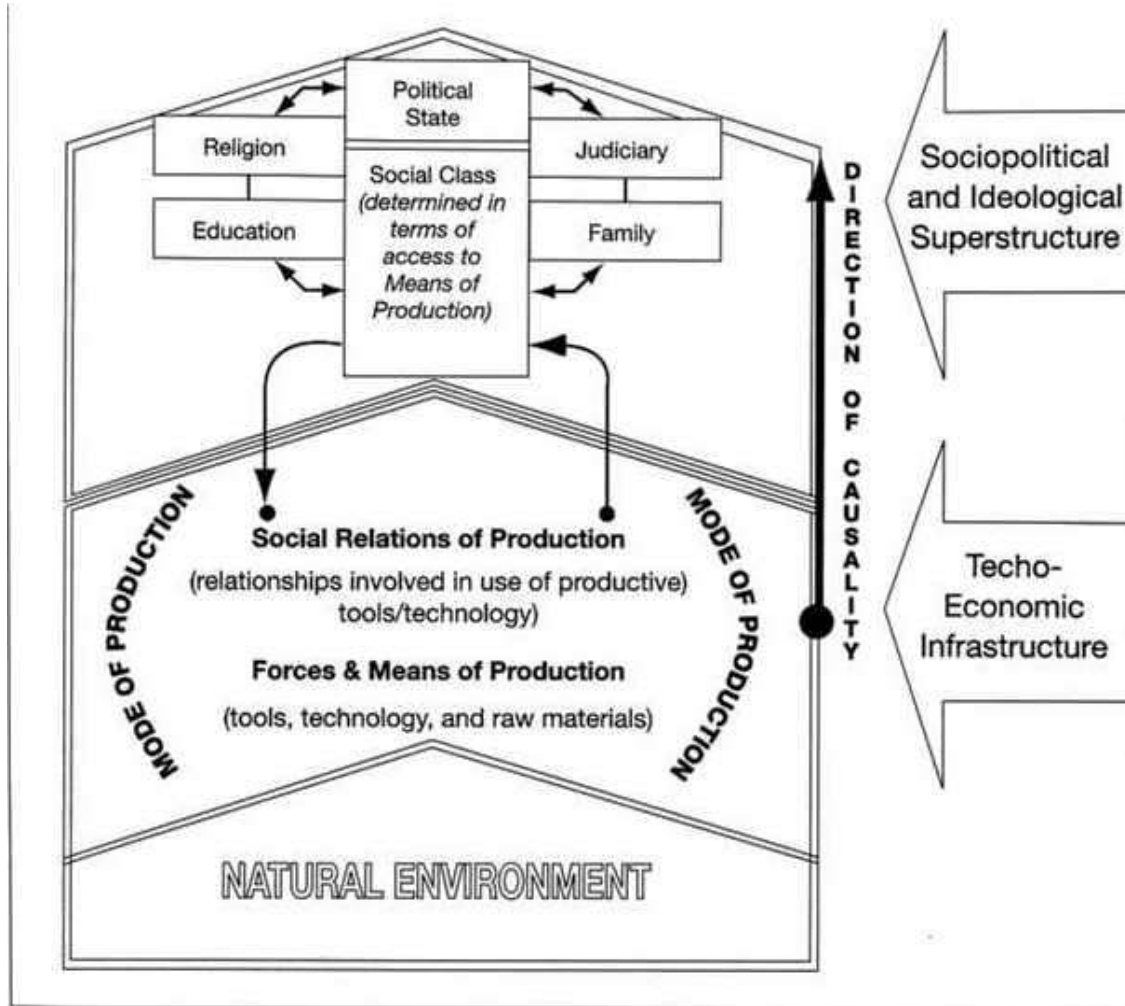
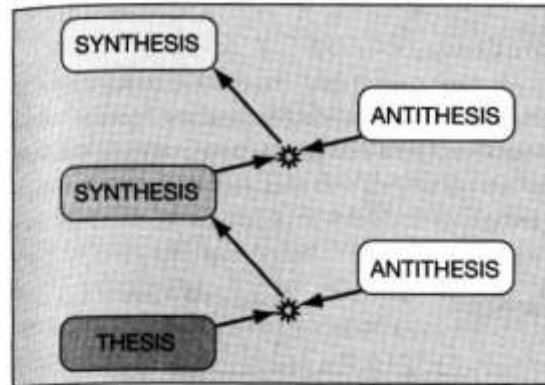


## Modeling Marxist Theory

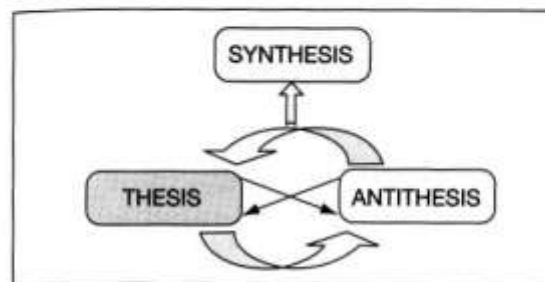
All diagrams are taken from *Perspectives on Culture*. H. Sidky. 2004



**Figure 14.1** Key subsystems in Marx's model of sociocultural systems.

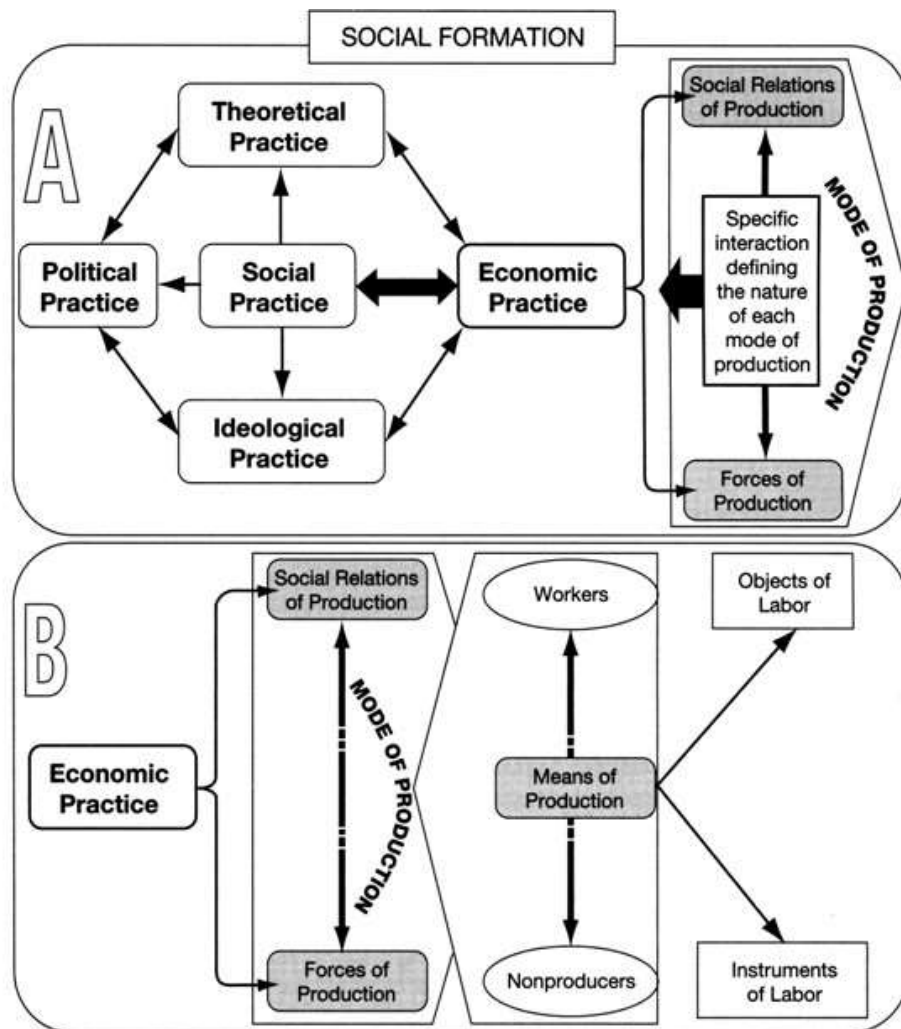


(a)

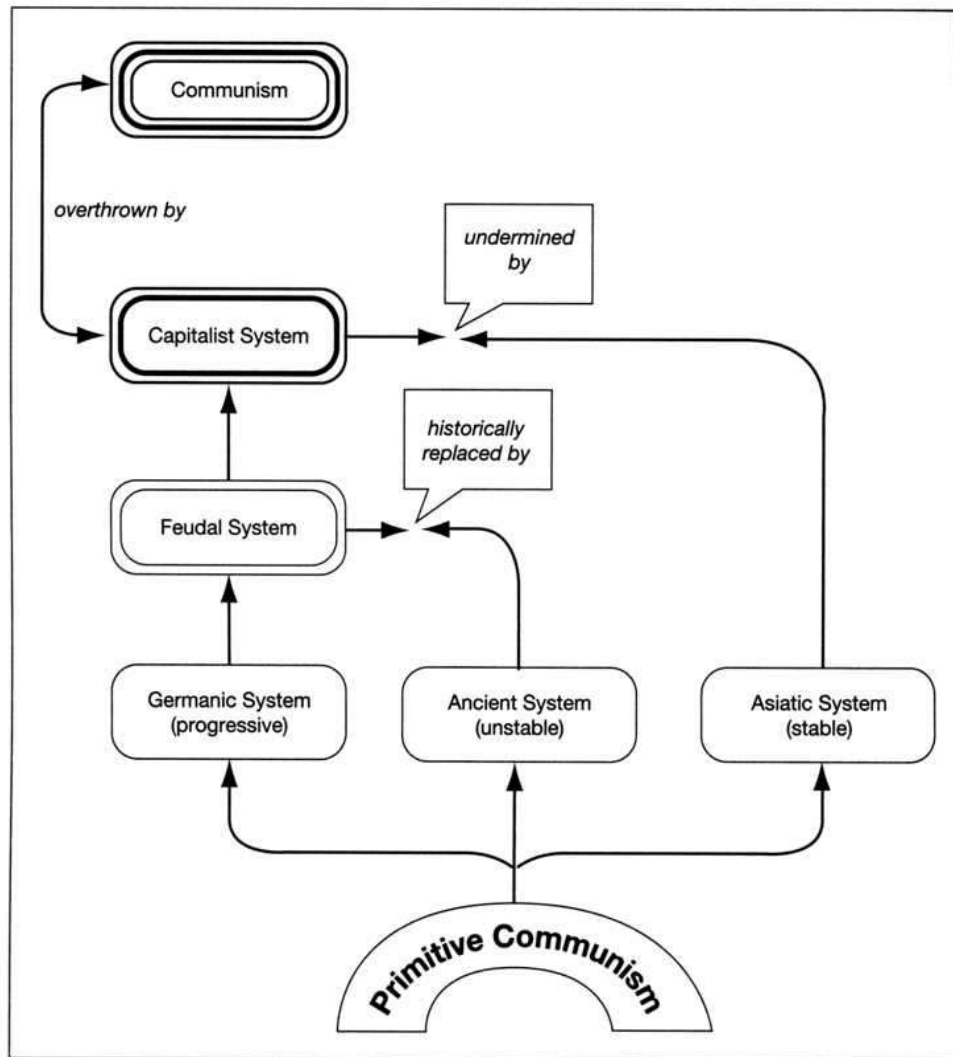


(b)

**Figure 14.2** (a) Hegel's dialectical model of historical development. (b) Hegel's dialectic thesis-antithesis-synthesis triad.



**Figure 14.3** Marx's social formation. Economic practice is a derivative of interactions between forces of production (specific labor processes that transform raw materials into use value) and relations of production (how surplus labor is expropriated). Economic practice determines the nature of all other practices. *After Taylor (1979) and M. H. Sidky (1987).*



**Figure 14.4** Marx's multilinear evolutionary model. *After Layton (1997).*