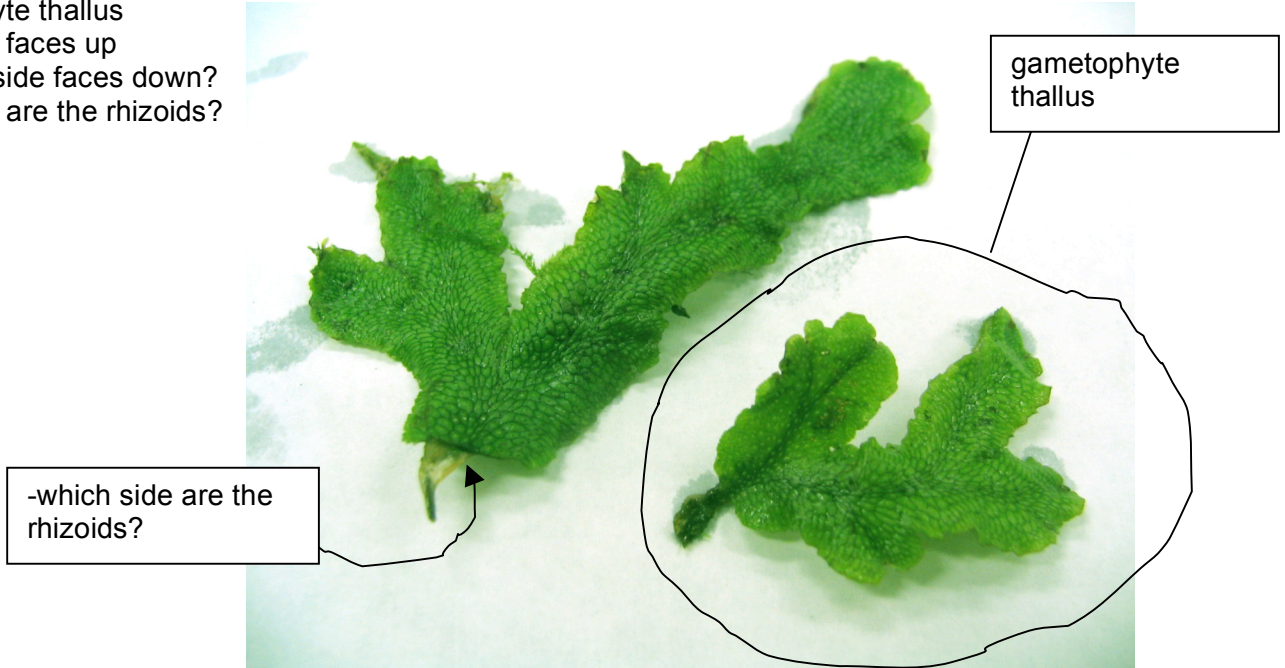


I. Liverwort Thallus

1. Macroscopic view

Label:

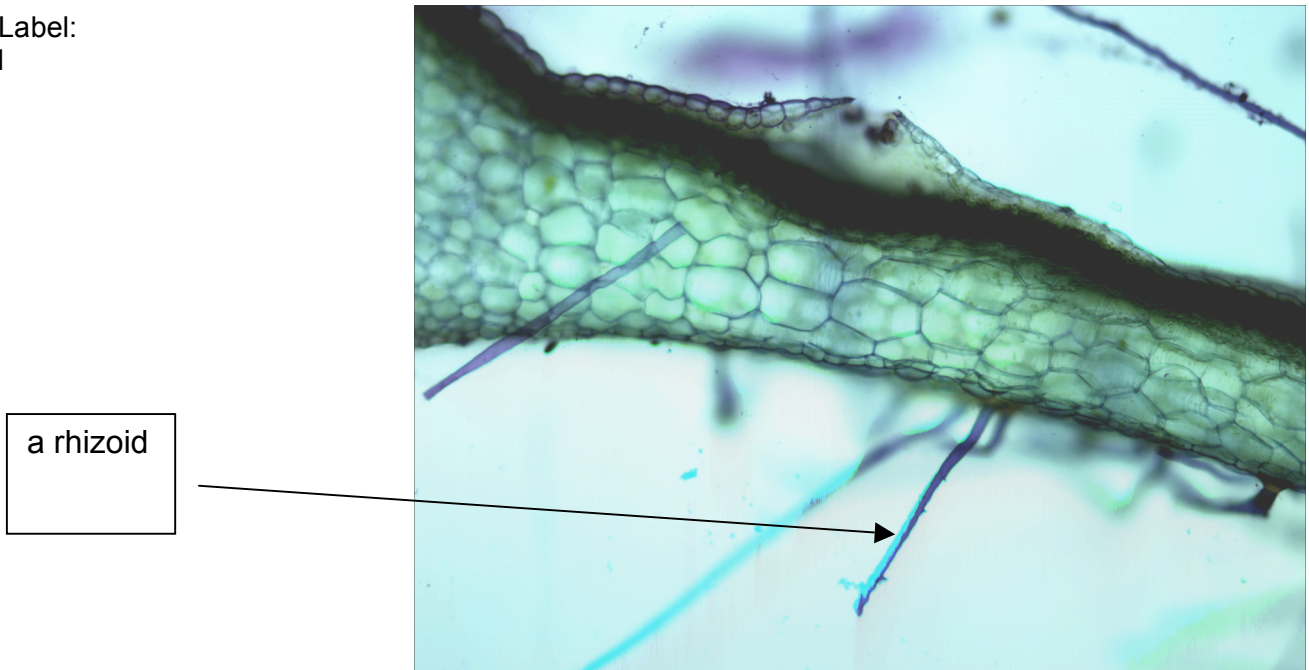
- gametophyte thallus
- which side faces up and which side faces down?
- which side are the rhizoids?



2. Microscopic views

a. Thallus X-section views view at 10x

- Find and Label:
- a rhizoid

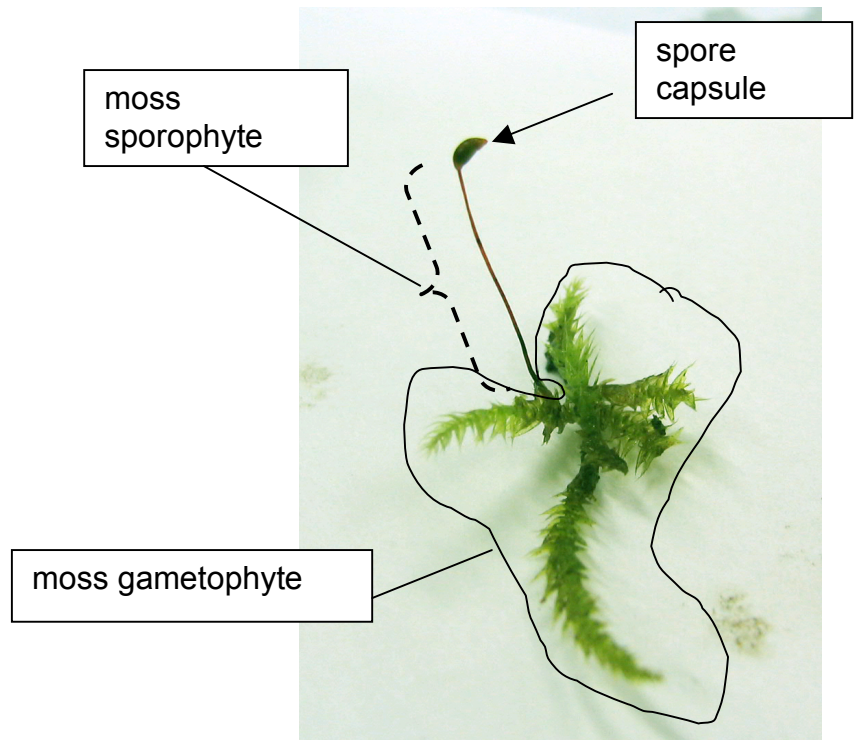


II. Moss

1. Macroscopic views

label:

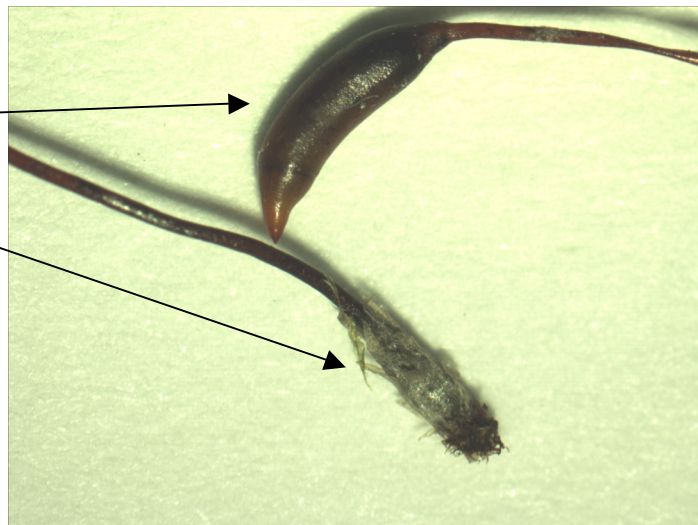
- part of the moss sporophyte plant
- sporophyte capsule
- part of the moss gametophyte plant



c. single detached moss sporophyte

label:

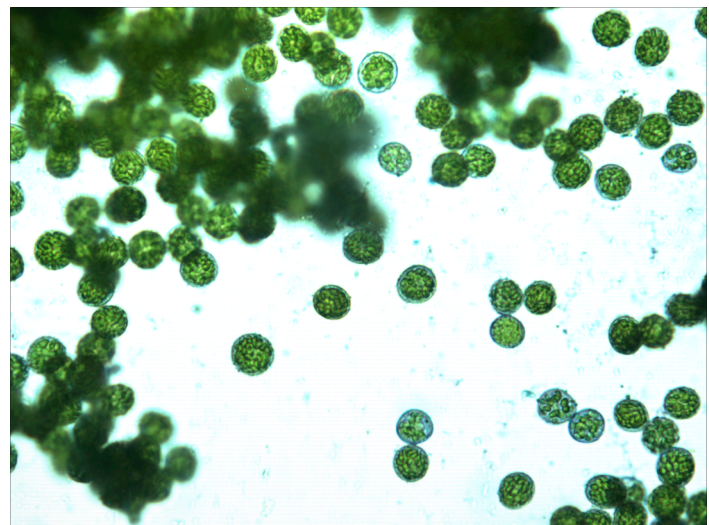
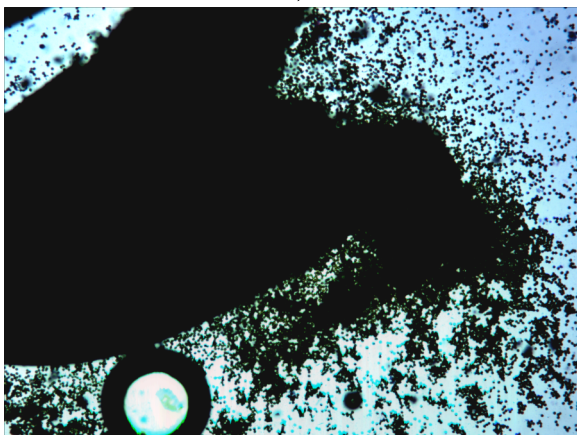
- the foot
- the capsule



b. moss spores plus ruptured capsule

label:

- a spore
- ruptured capsule

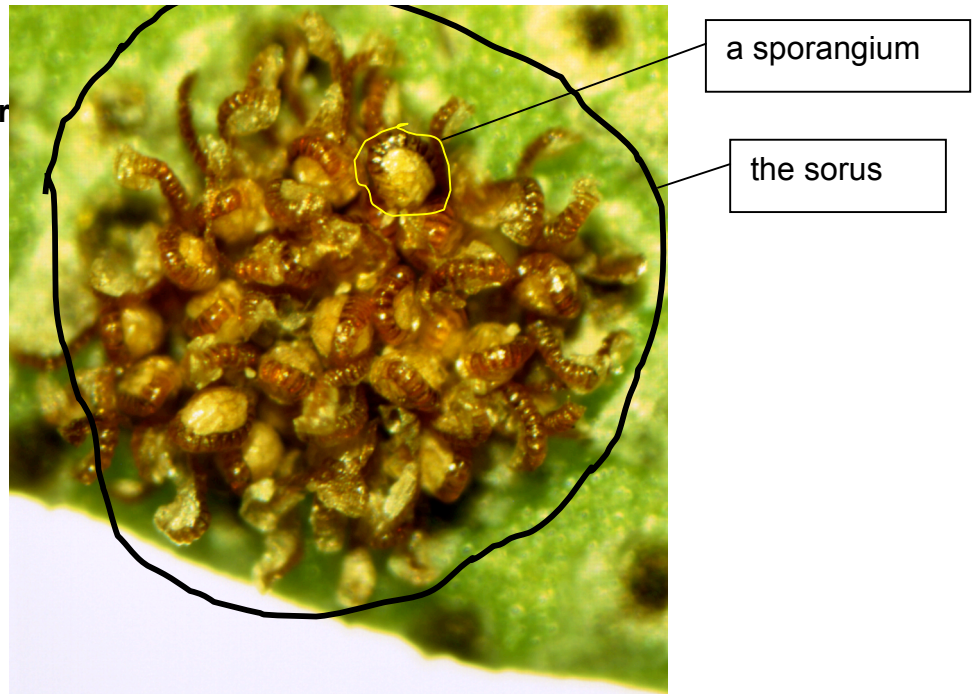


I. Fern

1. Fern Sorus - find and insert

Label:

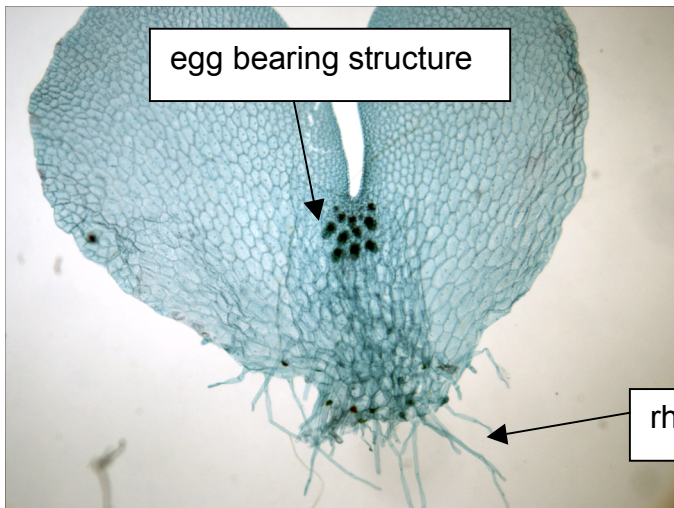
- the sorus
- a sporangium



2. Fern Gametophytes

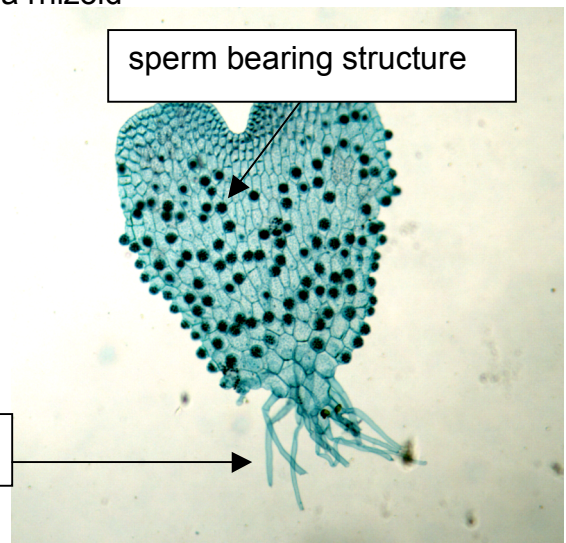
a. female gametophyte:

Label: Structure bearing plant egg, rhizoid



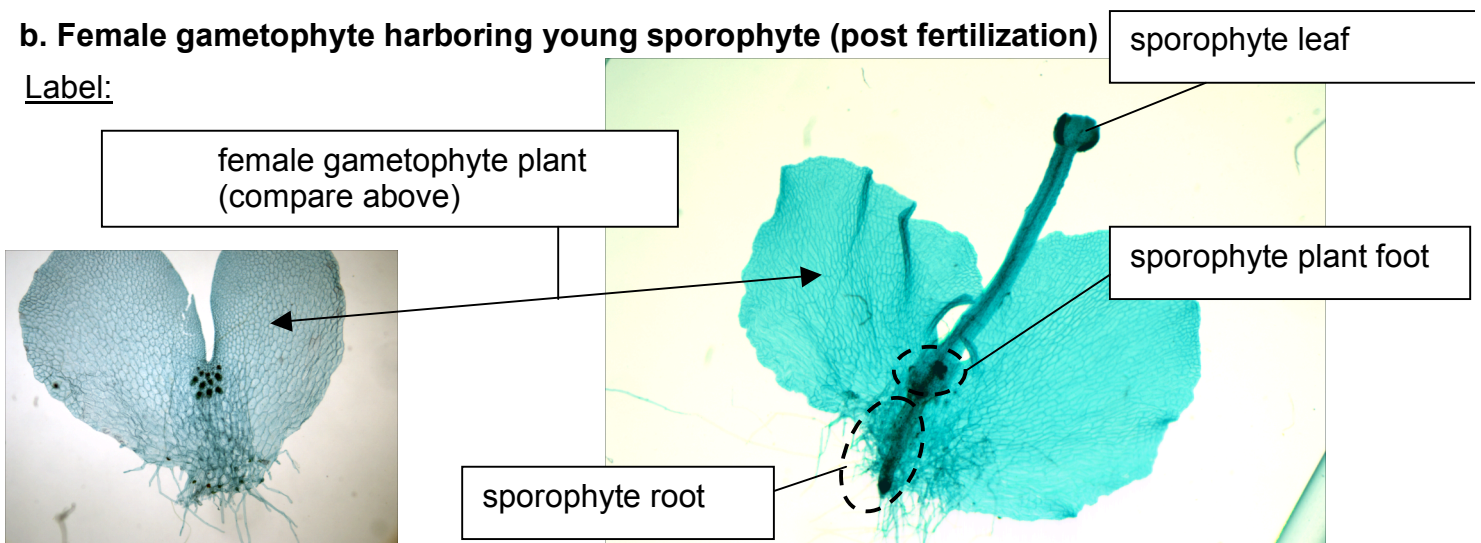
b. male gametophyte:

Label: Structuring bearing plant sperm, a rhizoid



b. Female gametophyte harboring young sporophyte (post fertilization)

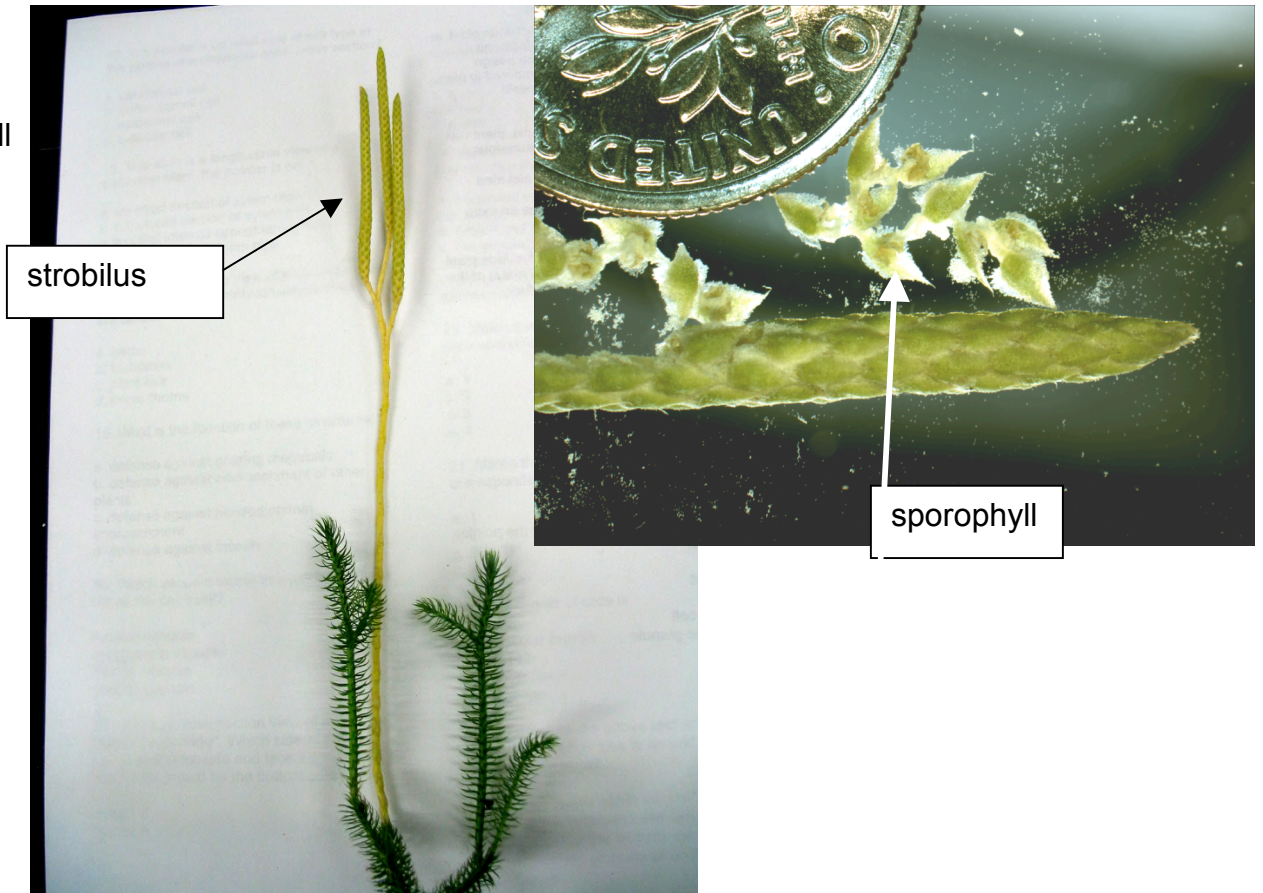
Label:



1. Macroscopic View of Clubmoss

Label:

- a strobilus
- a sporophyll



1. Equisetum (Horsetail) Macroscopic View

Label:

- strobilus
- a sporophyll
(also called sproangiophore)

